

LTA4H RABBIT PAB

Cat.#: S217582

Product Name: Anti-LTA4H Rabbit Polyclonal Antibody

Synonyms:

UNIPROT ID: P09960 (Gene Accession - BC032528)

Background: LTA4H (Leukotriene A4-hydrolase) is a Zn²⁺-containing enzyme with both epoxide hydrolase and aminopeptidase activity. As an epoxide hydrolase, LTA4H catalyzes the hydration of LTA4 to leukotriene B4 (LTB4, 5S,12R-dihydroxy-6,14-cis-8,10-trans-eicosatetraenoic acid), a potent lipid chemoattractant that influences inflammation, immune responses, and host defense against infection. As an aminopeptidase, LTA4H catalyzes the cleavage of amides of para-nitroaniline. The human LTA4H gene encodes a 610 amino acid protein.

Immunogen: Fusion protein of human LTA4H

Applications: ELISA, WB, IHC

Recommended Dilutions: IHC: 25-100;WB: 200-1000;ELISA: 1000-2000

Host Species: Rabbit

Clonality: Rabbit Polyclonal

Isotype: Immunogen-specific rabbit IgG

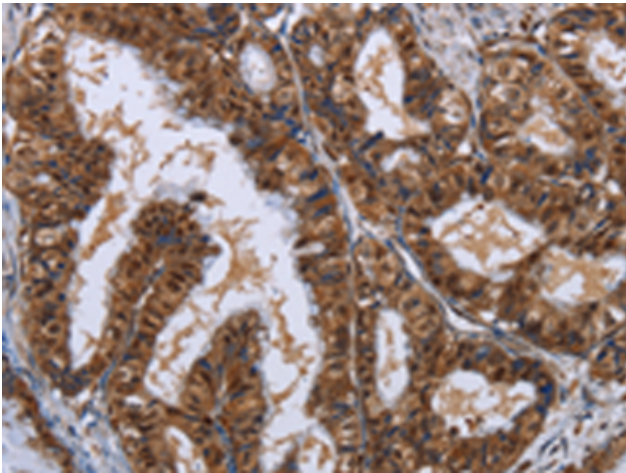
Purification: Antigen affinity purification

Species Reactivity: Human, Mouse, Rat

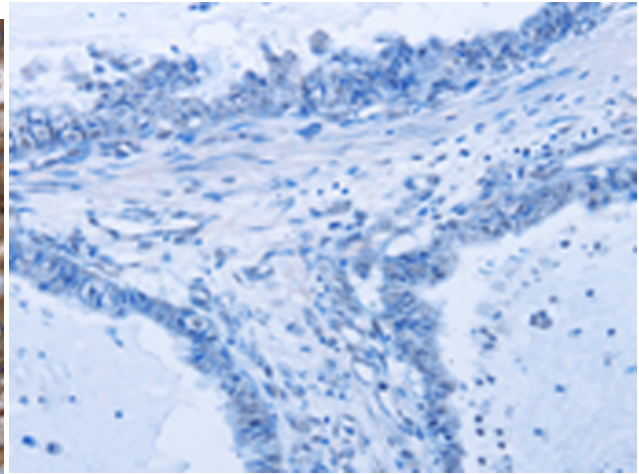
Constituents: PBS (without Mg²⁺ and Ca²⁺), pH 7.4, 150 mM NaCl, 0.05% Sodium Azide and 40% glycerol

Research Areas: Cancer, Metabolism, Immunology

Storage & Shipping: Store at -20°C. Avoid repeated freezing and thawing



Immunohistochemistry analysis of paraffin embedded Human esophagus cancer tissue using 217582(LTA4H Antibody) at a dilution of 1/30(Cytoplasm and Nucleus).



In comparison with the IHC on the left, the same paraffin-embedded Human esophagus cancer tissue is first treated with the fusion protein and then with 217582(Anti-LTA4H Antibody) at dilution 1/30.



Gel: 8%SDS-PAGE, Lysate: 40 µg;
Lane: Human fetal brain tissue;
Primary antibody: 217582(LTA4H Antibody) at dilution 1/500;
Secondary antibody: Goat anti rabbit IgG at 1/8000 dilution;
Exposure time: 2 minutes