

LTB4R2 RABBIT PAB

Cat.#: S220683

Product Name: Anti-LTB4R2 Rabbit Polyclonal Antibody

Synonyms: BLT2; NOP9; BLTR2; JULF2; KPG_004; LTB4-R2; LTB4-R 2

UNIPROT ID: Q9NPC1 (Gene Accession - NP_001158164)

Background: Predicted to enable G protein-coupled peptide receptor activity and leukotriene B4 receptor activity. Predicted to be involved in inflammatory response and neuropeptide signaling pathway. Predicted to act upstream of or within keratinocyte migration and signal transduction. Located in nucleoplasm and plasma membrane.

Immunogen: Synthetic peptide of human LTB4R2

Applications: ELISA, WB, IHC

Recommended Dilutions: IHC: 50-200;WB: 500-2000;ELISA: 5000-10000

Host Species: Rabbit

Clonality: Rabbit Polyclonal

Isotype: Immunogen-specific rabbit IgG

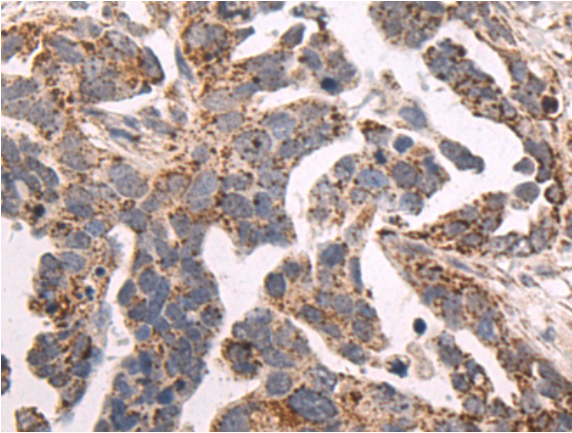
Purification: Antigen affinity purification

Species Reactivity: Human, Mouse, Rat

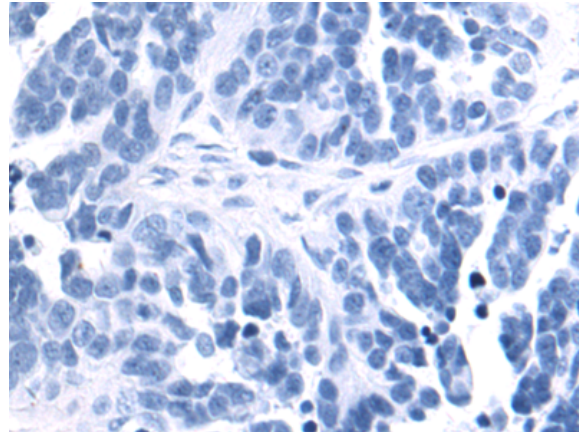
Constituents: PBS (without Mg²⁺ and Ca²⁺), pH 7.4, 150 mM NaCl, 0.05% Sodium Azide and 40% glycerol

Research Areas: Metabolism, Cardiovascular, Immunology

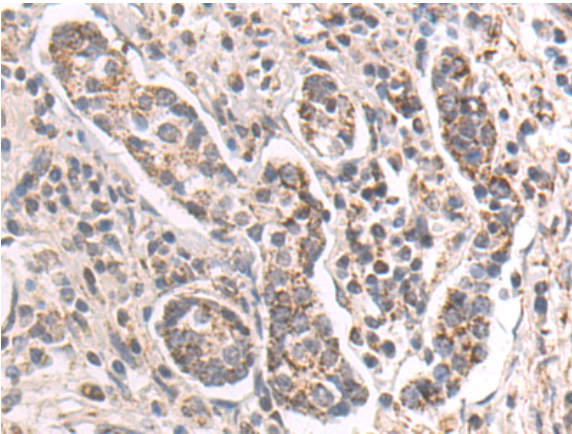
Storage & Shipping: Store at -20°C. Avoid repeated freezing and thawing



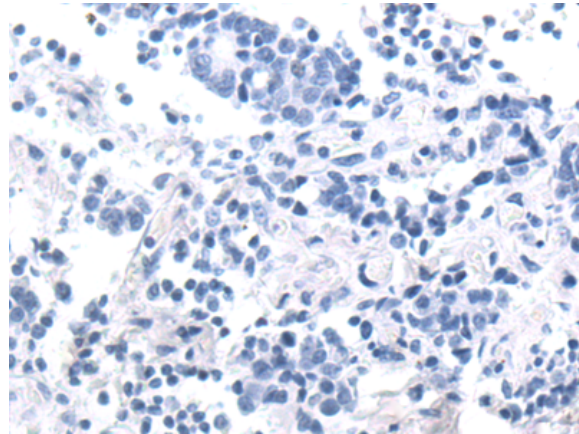
Immunohistochemistry analysis of paraffin embedded Human colorectal cancer tissue using 220683(LTB4R2 Antibody) at a dilution of 1/50(Cytoplasm).



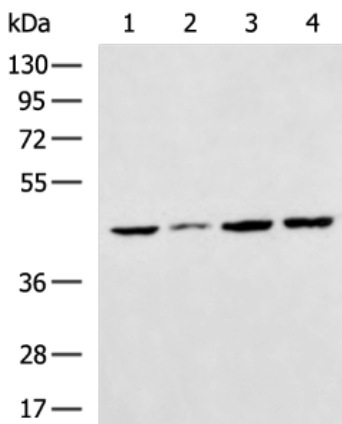
In comparison with the IHC on the left, the same paraffin-embedded Human colorectal cancer tissue is first treated with the synthetic peptide and then with 220683(Anti-LTB4R2 Antibody) at dilution 1/50.



The image on the left is immunohistochemistry of paraffin-embedded Human gastric cancer tissue using 220683(Anti-LTB4R2 Antibody) at a dilution of 1/50.



In comparison with the IHC on the left, the same paraffin-embedded Human gastric cancer tissue is first treated with synthetic peptide and then with D261870(Anti-LTB4R2 Antibody) at dilution 1/50.



Gel: 8%SDS-PAGE, Lysate: 40 µg;
Lane 1-4: Mouse fetal brain tissue, Rat liver tissue,
Mouse liver tissue, Mouse brain tissue lysates;
Primary antibody: 220683(LTB4R2 Antibody) at
dilution 1/600;
Secondary antibody: HRP-conjugated Goat anti
rabbit IgG at 1/5000 dilution;
Exposure time: 20 seconds



Product Description

Pioneering GTPase and Oncogene Product Development since 2010
