

LTK RABBIT MAB

Cat.#: N263409

Product Name: Anti-LTK Rabbit Monoclonal Antibody

Synonyms: TYK1

UNIPROT ID: P29376

Background: Receptor with a tyrosine-protein kinase activity.

Immunogen: A synthetic peptide of human LTK

Applications: WB,IHC-P

Recommended Dilutions: WB: 1/500-1/1000 IHC: 1/50-1/100

Host Species: Rabbit

Clonality: Rabbit Monoclonal

Clone ID: R02-8A4

MW: Calculated MW: 92 kDa; Observed MW: 92 kDa

Isotype: IgG

Purification: Affinity Purified

Species Reactivity: Human,Rat

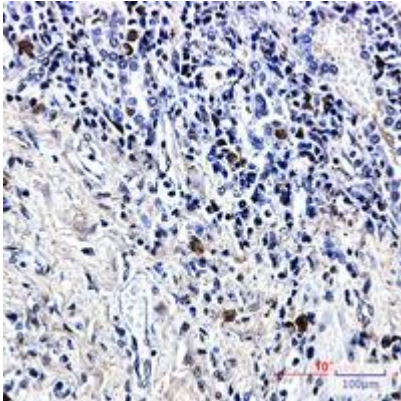
Conjugation: Unconjugated

Modification: Unmodified

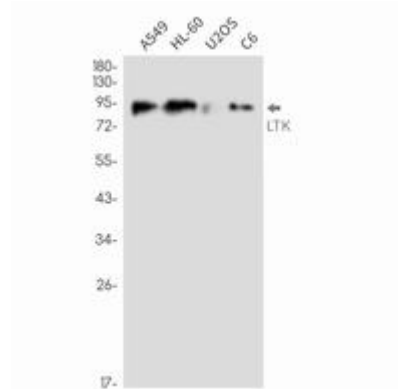
Constituents: PBS (without Mg²⁺ and Ca²⁺), pH 7.3 containing 50% glycerol, 0.5% BSA and 0.02% sodium azide

Research Areas: -

Storage & Shipping: Store at -20°C. Avoid repeated freezing and thawing



Immunohistochemistry analysis of paraffin-embedded Human lung cancer using LTK antibody. High-pressure and temperature Sodium Citrate pH 6.0 was used for antigen retrieval.



Western blot analysis of LTK in A549, HL-60, U2OS, C6 lysates using LTK antibody.