

## LTO1 RABBIT PAB

**Cat.#:** S220771

**Product Name:** Anti-LTO1 Rabbit Polyclonal Antibody

**Synonyms:** CIABI; TAOSI; ORAOVI

**UNIPROT ID:** Q8WV07 (Gene Accession - NP\_703152 )

**Background:** The complex LTO1:YAE1 functions as a target specific adapter that probably recruits apo-ABCE1 to the cytosolic iron-sulfur protein assembly (CIA) complex machinery (PubMed:26182403). May be required for biogenesis of the large ribosomal subunit and initiation of translation (PubMed:23318452). May play a role in the regulation of proline metabolism and ROS production (PubMed:24930674).

**Immunogen:** Synthetic peptide of human LTO1

**Applications:** ELISA, IHC

**Recommended Dilutions:** IHC: 20-100; ELISA: 5000-10000

**Host Species:** Rabbit

**Clonality:** Rabbit Polyclonal

**Isotype:** Immunogen-specific rabbit IgG

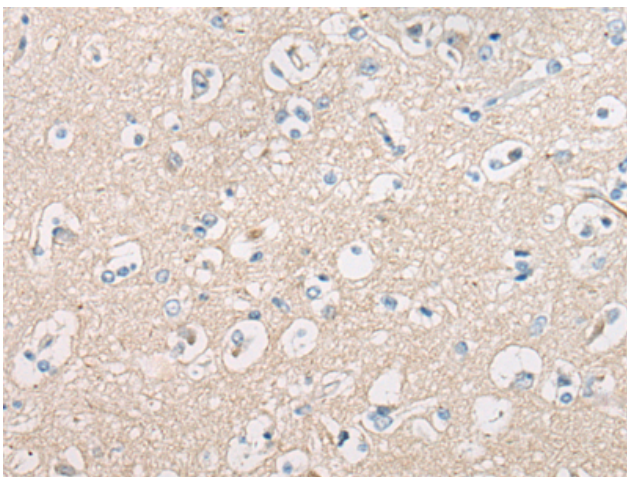
**Purification:** Antigen affinity purification

**Species Reactivity:** Human, Mouse

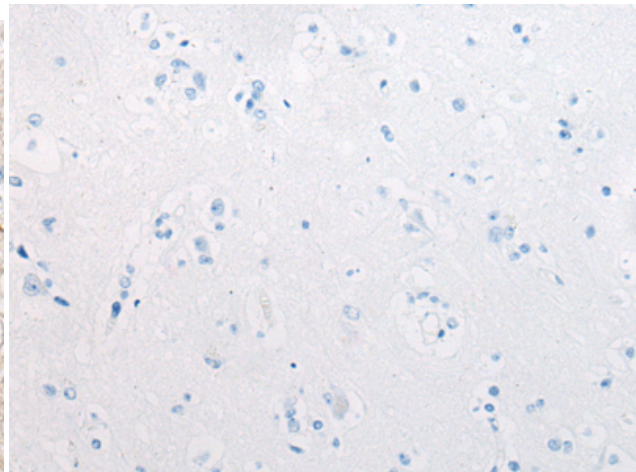
**Constituents:** PBS (without Mg<sup>2+</sup> and Ca<sup>2+</sup>), pH 7.4, 150 mM NaCl, 0.05% Sodium Azide and 40% glycerol

**Research Areas:** Cancer

**Storage & Shipping:** Store at -20°C. Avoid repeated freezing and thawing



Immunohistochemistry analysis of paraffin embedded Human brain tissue using 220771(LTO1 Antibody) at a dilution of 1/25(Cytoplasm).



In comparison with the IHC on the left, the same paraffin-embedded Human brain tissue is first treated with the synthetic peptide and then with 220771(Anti-LTO1 Antibody) at dilution 1/25.