

LUMICAN RABBIT MAB

Cat.#: N262479

Product Name: Anti-Lumican Rabbit Monoclonal Antibody

Synonyms: LDC; LUM; Lumican; SLRR2D

UNIPROT ID: P51884

Background: Belongs to the small leucine-rich proteoglycan (SLRP) family. SLRP class II subfamily. Contains 11 LRR (leucine-rich) repeats. Contains 1 LRRNT domain.

Immunogen: A synthetic peptide of human Lumican

Applications: WB,IHC-F,IHC-P,ICC/IF

Recommended Dilutions: WB: 1/500-1/1000 IHC: 1/50-1/100 IF: 1/50-1/200

Host Species: Rabbit

Clonality: Rabbit Monoclonal

Clone ID: R02-7F6

MW: Calculated MW: 38 kDa; Observed MW: 60 kDa

Isotype: IgG

Purification: Affinity Purified

Species Reactivity: Human,Mouse,Rat

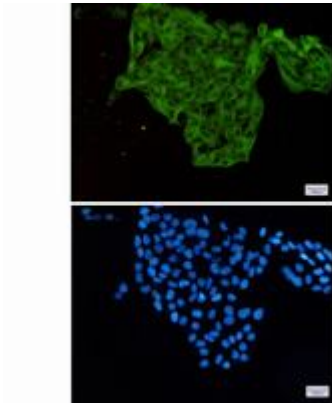
Conjugation: Unconjugated

Modification: Unmodified

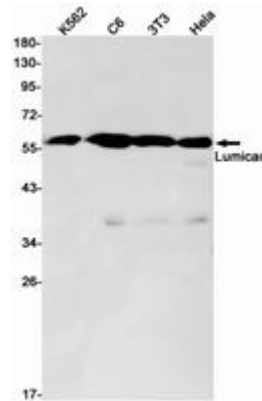
Constituents: PBS (without Mg²⁺ and Ca²⁺), pH 7.3 containing 50% glycerol, 0.5% BSA and 0.02% sodium azide

Research Areas: Cancer

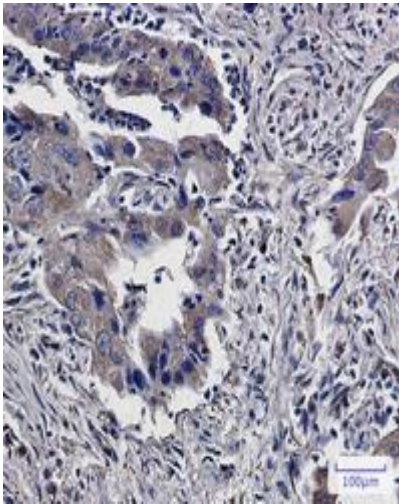
Storage & Shipping: Store at -20°C. Avoid repeated freezing and thawing



Immunocytochemistry analysis of Lumican (green) in Hela using Lumican antibody, and DAPI (blue)



Western blot analysis of Lumican in K562, C6, 3T3, Hela lysates using Lumican antibody.



Immunohistochemistry analysis of paraffin-embedded Human lung cancer using Lumican antibody. High-pressure and temperature Sodium Citrate pH 6.0 was used for antigen retrieval.