

LY6A RABBIT PAB

Cat.#: S214013

Product Name: Anti-Ly6a Rabbit Polyclonal Antibody

Synonyms: TAP; Sca1; Sca-1; Ly-6A.2; Ly-6A/E; Ly-6E.1

UNIPROT ID: P05533 (Gene Accession - NP_034868)

Background: The activity of natural killer (NK) cells is regulated by members of multiple receptor families that recognize class I MHC molecules, such as the killer cell inhibitory receptor/leukocyte immunoglobulin-like receptor (KIR/LIR) family and the C-type lectin superfamily. The Ly-6 alloantigens represent a family of phosphatidylinositol anchored proteins that play a role in the process of T lymphocyte activation. Ly-6 expression is commonly induced on T and B lymphocytes after activation by mitogens. Ly-6A/E is a phosphatidylinositol-linked transmembrane member of the Ly-6 family that is produced in humans after 4 weeks of age. γ -interferon and TNF regulate Ly-6A/E at the level of transcription and mRNA stabilization in certain thymocytes and T-cells.

Immunogen: Synthetic peptide of mouse Ly6a

Applications: ELISA, IHC

Recommended Dilutions: IHC: 20-100; ELISA: 5000-10000

Host Species: Rabbit

Clonality: Rabbit Polyclonal

Isotype: Immunogen-specific rabbit IgG

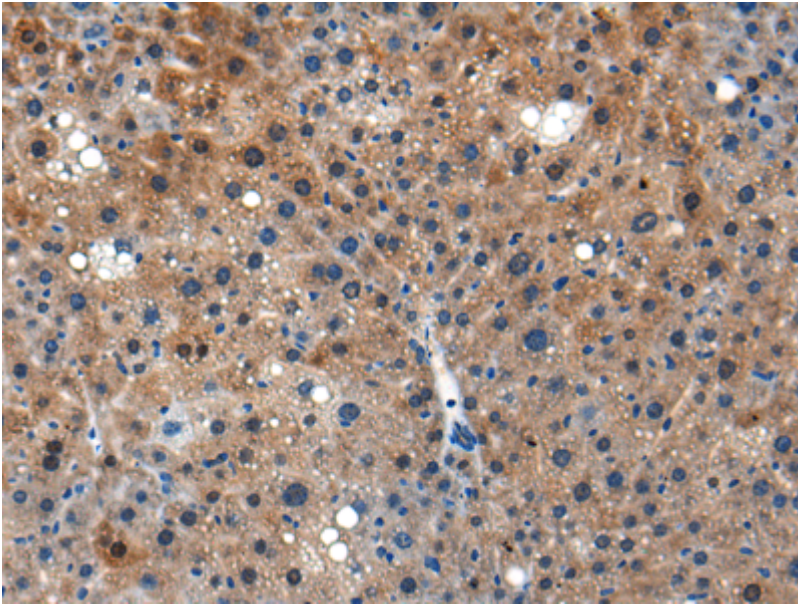
Purification: Antigen affinity purification

Species Reactivity: Human, Mouse

Constituents: PBS (without Mg²⁺ and Ca²⁺), pH 7.4, 150 mM NaCl, 0.05% Sodium Azide and 40% glycerol

Research Areas: Immunology

Storage & Shipping: Store at -20°C. Avoid repeated freezing and thawing



Immunohistochemistry analysis of paraffin-embedded Mouse liver tissue using 214013(Ly6a Antibody) at a dilution of 1/25(Cell membrane).