

## LYMPHOTACTIN RABBIT PAB

**Cat.#:** N225184

**Product Name:** Anti-Lymphotactin Rabbit pAb

**Synonyms:** XCL1; LTN; SCYC1; Lymphotactin; ATAC; C motif chemokine 1; Cytokine SCM-1; Lymphotaxin; SCM-1-alpha; Small-inducible cytokine C1; XC chemokine ligand 1; XCL2; SCYC2; Cytokine SCM-1 beta; C motif chemokine 2; XC chemokine ligand 2

**UNIPROT ID:** P47992/Q9UBD3

**Background:** Chemotactic activity for lymphocytes but not for monocytes or neutrophils. In thymus, mediates medullary accumulation of thymic dendritic cells and contributes to regulatory T cell development, playing a role in self-tolerance establishment.

**Immunogen:** The antiserum was produced against synthesized peptide derived from the Internal region of human XCL1/XCL2. AA range:51-100

**Applications:** WB,ELISA

**Recommended Dilutions:** WB: 1/500-1/1000 ELISA: 1/10000

**Host Species:** Rabbit

**Clonality:** Rabbit Polyclonal

**Clone ID:** -

**MW:** Calculated MW: 13 kDa; Observed MW: 13 kDa

**Isotype:** IgG

**Purification:** Affinity Purified

**Species Reactivity:** Human

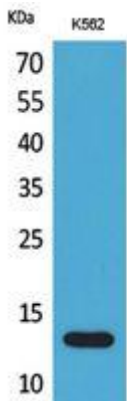
**Conjugation:** Unconjugated

**Modification:** Unmodified

**Constituents:** PBS (without Mg<sup>2+</sup> and Ca<sup>2+</sup>), pH 7.3 containing 50% glycerol, 0.5% BSA and 0.02% sodium azide

**Research Areas:** Immunology

**Storage & Shipping:** Store at -20°C. Avoid repeated freezing and thawing



Western blot analysis of Lymphotactin in K562 lysates using Lymphotactin antibody.