

## LYSOZYME RABBIT MAB

**Cat.#:** N262481

**Product Name:** Anti-Lysozyme Rabbit Monoclonal Antibody

**Synonyms:** LZM; LYZF1

**UNIPROT ID:** P61626

**Background:** Lysozymes have primarily a bacteriolytic function; those in tissues and body fluids are associated with the monocyte-macrophage system and enhance the activity of immunoagents.

**Immunogen:** A synthetic peptide of human Lysozyme

**Applications:** WB, ICC/IF, IP

**Recommended Dilutions:** WB: 1/500-1/1000 IF: 1/50-1/200 IP: 1/20

**Host Species:** Rabbit

**Clonality:** Rabbit Monoclonal

**Clone ID:** R09-9D6

**MW:** Calculated MW: 17 kDa; Observed MW: 17 kDa

**Isotype:** IgG

**Purification:** Affinity Purified

**Species Reactivity:** Human, Mouse, Rat

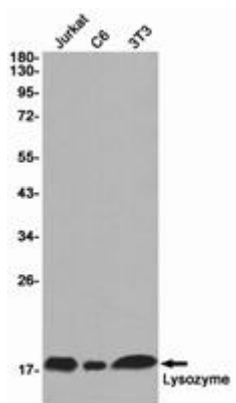
**Conjugation:** Unconjugated

**Modification:** Unmodified

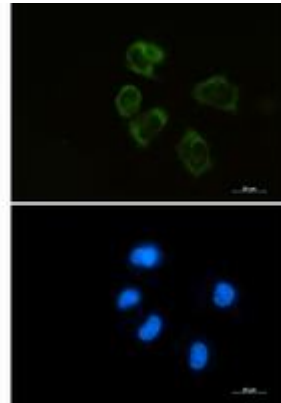
**Constituents:** PBS (without Mg<sup>2+</sup> and Ca<sup>2+</sup>), pH 7.3 containing 50% glycerol, 0.5% BSA and 0.02% sodium azide

**Research Areas:** Cell Biology

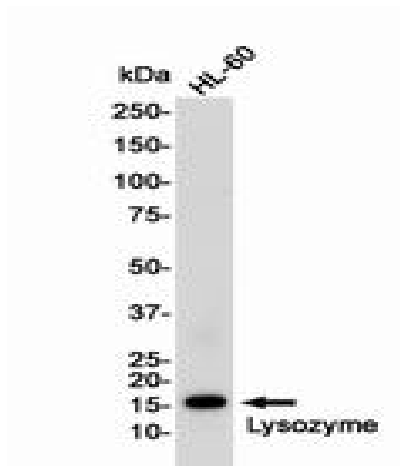
**Storage & Shipping:** Store at -20°C. Avoid repeated freezing and thawing



Western blot analysis of Lysozyme in Jurkat, C6, 3T3 lysates using Lysozyme antibody



Immunocytochemistry analysis of Lysozyme (green) in HEPG2 using Lysozyme antibody, and DAPI (blue).



Western blot analysis of Lysozyme in HL-60 lysates using Lysozyme antibody.