

LYSOZYME RABBIT PAB

Cat.#: N225650

Product Name: Anti-Lysozyme Rabbit pAb

Synonyms: LZM; LYZF1

UNIPROT ID: P61626

Background: Lysozymes have primarily a bacteriolytic function; those in tissues and body fluids are associated with the monocyte-macrophage system and enhance the activity of immunoagents.

Immunogen: A synthesized peptide derived from human Lysozyme

Applications: WB,IHC-P,ICC/IF,IP

Recommended Dilutions: WB: 1/500-1/1000 IHC: 1/50-1/100 IF: 1/50-1/200 IP: 1/20

Host Species: Rabbit

Clonality: Rabbit Polyclonal

Clone ID: -

MW: Calculated MW: 17 kDa; Observed MW: 17 kDa

Isotype: IgG

Purification: Affinity Chromatography

Species Reactivity: Human,Mouse

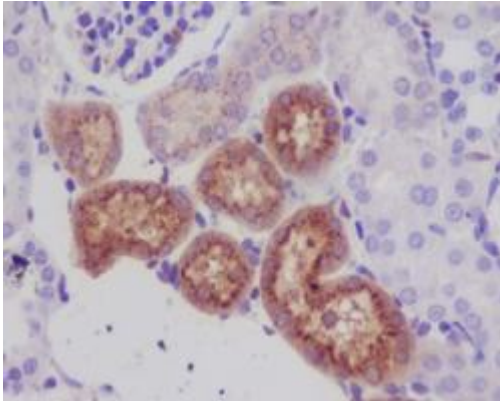
Conjugation: Unconjugated

Modification: Unmodified

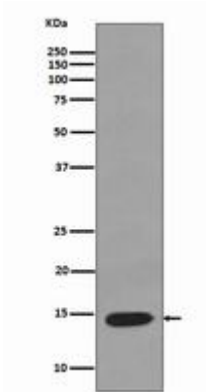
Constituents: PBS (without Mg²⁺ and Ca²⁺), pH 7.3 containing 50% glycerol, 0.5% BSA and 0.02% sodium azide

Research Areas: Cell Biology

Storage & Shipping: Store at -20°C. Avoid repeated freezing and thawing



Immunohistochemistry analysis of paraffin-embedded mouse kidney using Lysozyme antibody. High-pressure and temperature Sodium Citrate pH 6.0 was used for antigen retrieval.



Western blot analysis of Lysozyme in K562 lysates; using Lysozyme antibody.