

LYVE1 RABBIT MAB

Cat.#: N262482

Product Name: Anti-LYVE1 Rabbit Monoclonal Antibody

Synonyms: CRSBP-1; Extracellular link domain-containing protein 1

UNIPROT ID: Q8BHC0

Background: Ligand-specific transporter trafficking between intracellular organelles (TGN) and the plasma membrane. Plays a role in autocrine regulation of cell growth mediated by growth regulators containing cell surface retention sequence binding (CRS).

Immunogen: Recombinant protein of mouse LYVE1

Applications: WB,IHC-P,IP

Recommended Dilutions: WB: 1/500-1/1000 IHC: 1/50-1/100 IP: 1/20

Host Species: Rabbit

Clonality: Rabbit Monoclonal

Clone ID: R03-3C1

MW: Calculated MW: 35 kDa; Observed MW: 35-70 kDa

Isotype: IgG

Purification: Affinity Purified

Species Reactivity: Human,Mouse

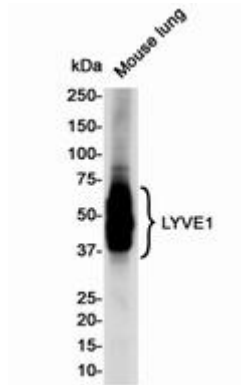
Conjugation: Unconjugated

Modification: Unmodified

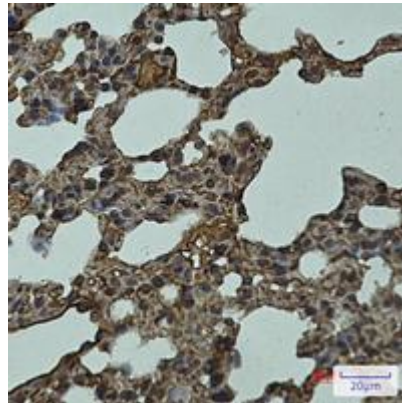
Constituents: PBS (without Mg²⁺ and Ca²⁺), pH 7.3 containing 50% glycerol, 0.5% BSA and 0.02% sodium azide

Research Areas: Cardiovascular

Storage & Shipping: Store at -20°C. Avoid repeated freezing and thawing



Western blot analysis of LYVE1 in mouse Lung lysates using LYVE1 antibody.



Immunohistochemistry analysis of paraffin-embedded mouse lung using LYVE1 antibody. High-pressure and temperature Sodium Citrate pH 6.0 was used for antigen retrieval.