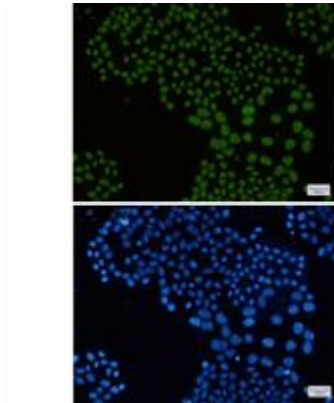
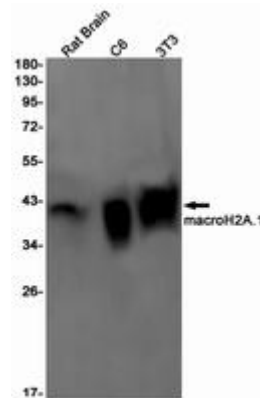


MACRO H2A.1 RABBIT MAB**Cat.#:** N262483**Product Name:** Anti-Macro H2A.1 Rabbit Monoclonal Antibody**Synonyms:** H2A.y; H2A/y; mH2A1; H2AF12M; MACROH2A1.1; macroH2A1.2**UNIPROT ID:** O75367**Background:** Involved in stable X chromosome inactivation. Inhibits the binding of transcription factors and interferes with the activity of remodeling SWI/SNF complexes. Inhibits histone acetylation by EP300 and recruits class I HDACs, which induces an hypoacetylated state of chromatin.**Immunogen:** A synthetic peptide of human macroH2A.1**Applications:** WB, ICC/IF**Recommended Dilutions:** WB: 1/500-1/1000 IF: 1/50-1/200**Host Species:** Rabbit**Clonality:** Rabbit Monoclonal**Clone ID:** R04-8E5**MW:** Calculated MW: 40 kDa; Observed MW: 40 kDa**Isotype:** IgG**Purification:** Affinity Purified**Species Reactivity:** Mouse, Rat**Conjugation:** Unconjugated**Modification:** Unmodified**Constituents:** PBS (without Mg²⁺ and Ca²⁺), pH 7.3 containing 50% glycerol, 0.5% BSA and 0.02% sodium azide**Research Areas:** Epigenetics and Nuclear Signaling**Storage & Shipping:** Store at -20°C. Avoid repeated freezing and thawing



Immunocytochemistry analysis of macroH2A.1 (green) in HeLa using macroH2A.1 antibody, and DAPI (blue)



Western blot analysis of macroH2A.1 in rat Brain, C6, 3T3 lysates using Macro H2A.1 antibody.