

## MACRO H2A.1 RABBIT PAB

**Cat.#:** N225903

**Product Name:** Anti-Macro H2A.1 Rabbit pAb

**Synonyms:** H2A.y; H2A/y; mH2A1; H2AF12M; MACROH2A1.1; macroH2A1.2

**UNIPROT ID:** O75367

**Background:** Involved in stable X chromosome inactivation. Inhibits the binding of transcription factors and interferes with the activity of remodeling SWI/SNF complexes. Inhibits histone acetylation by EP300 and recruits class I HDACs, which induces an hypoacetylated state of chromatin.

**Immunogen:** A synthesized peptide derived from human macroH2A.1

**Applications:** WB,IHC-P,ICC/IF

**Recommended Dilutions:** WB: 1/500-1/1000 IHC: 1/50-1/100 IF: 1/50-1/200

**Host Species:** Rabbit

**Clonality:** Rabbit Polyclonal

**Clone ID:** -

**MW:** Calculated MW: 40 kDa; Observed MW: 40 kDa

**Isotype:** IgG

**Purification:** Affinity Chromatography

**Species Reactivity:** Human,Mouse,Rat

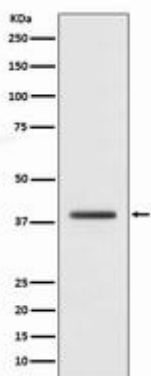
**Conjugation:** Unconjugated

**Modification:** Unmodified

**Constituents:** PBS (without Mg<sup>2+</sup> and Ca<sup>2+</sup>), pH 7.3 containing 50% glycerol, 0.5% BSA and 0.02% sodium azide

**Research Areas:** Epigenetics and Nuclear Signaling

**Storage & Shipping:** Store at -20°C. Avoid repeated freezing and thawing



Western blot analysis of macroH2A.1 in HepG2 lysates using Macro H2A.1 antibody.



# Product Description

Pioneering GTPase and Oncogene Product Development since 2010

---