

MAD2L1BP RABBIT PAB

Cat.#: S216628

Product Name: Anti-MAD2L1BP Rabbit Polyclonal Antibody

Synonyms: CMT2; RPI-261G23.6

UNIPROT ID: Q15013 (Gene Accession - BC002904)

Background: The protein encoded by this gene was identified as a binding protein of the MAD2 mitotic arrest deficient-like 1 (MAD2/MAD2L1). MAD2 is a key component of the spindle checkpoint that delays the onset of anaphase until all the kinetochores are attached to the spindle. This protein may interact with the spindle checkpoint and coordinate cell cycle events in late mitosis. Alternatively spliced transcript variants encoding distinct isoforms have been observed.

Immunogen: Fusion protein of human MAD2L1BP

Applications: ELISA, WB, IHC

Recommended Dilutions: IHC: 50-200;WB: 500-2000;ELISA: 2000-5000

Host Species: Rabbit

Clonality: Rabbit Polyclonal

Isotype: Immunogen-specific rabbit IgG

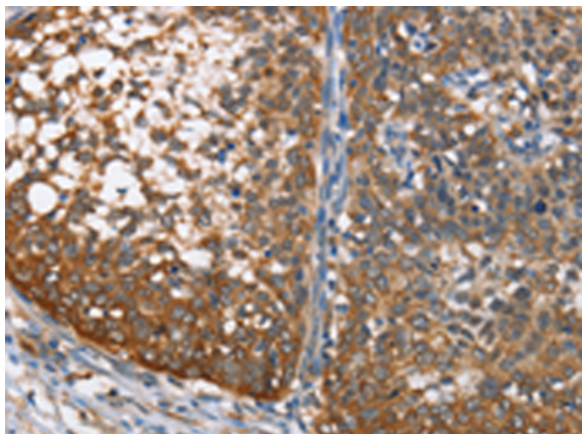
Purification: Antigen affinity purification

Species Reactivity: Human

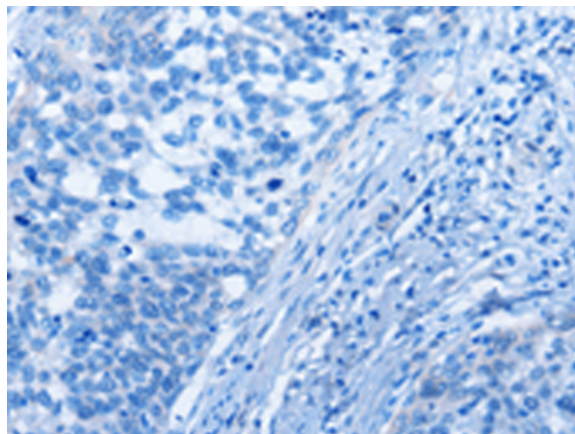
Constituents: PBS (without Mg²⁺ and Ca²⁺), pH 7.4, 150 mM NaCl, 0.05% Sodium Azide and 40% glycerol

Research Areas: Cancer

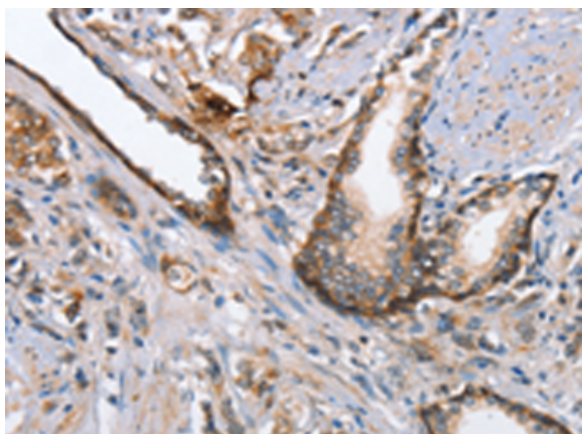
Storage & Shipping: Store at -20°C. Avoid repeated freezing and thawing



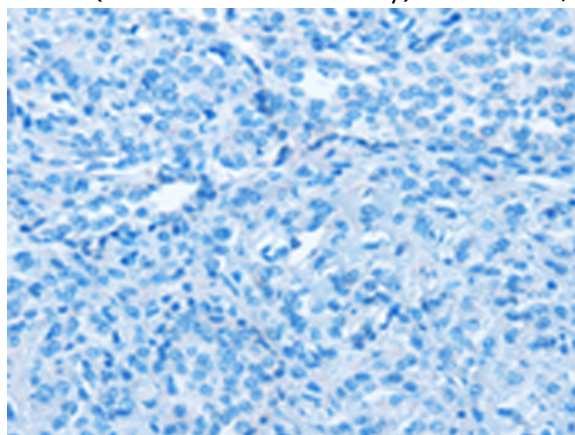
Immunohistochemistry analysis of paraffin embedded Human cervical cancer tissue using 216628(MAD2LIBP Antibody) at a dilution of 1/65(Cytoplasm or Nucleus).



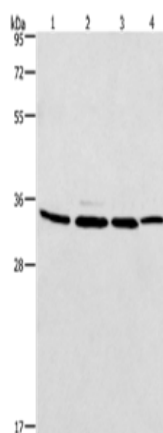
In comparison with the IHC on the left, the same paraffin-embedded Human cervical cancer tissue is first treated with the fusion protein and then with 216628(Anti-MAD2LIBP Antibody) at dilution 1/65.



The image on the left is immunohistochemistry of paraffin-embedded Human prostate cancer tissue using 216628(Anti-MAD2LIBP Antibody) at a dilution of 1/65.



In comparison with the IHC on the left, the same paraffin-embedded Human prostate cancer tissue is first treated with fusion protein and then with D220942(Anti-MAD2LIBP Antibody) at dilution 1/65.



Gel: 10%SDS-PAGE, Lysate: 40 µg;
Lane 1-4: A549 cells, 231 cells, PC3 cells, hela cells;
Primary antibody: 216628(MAD2LIBP Antibody) at dilution 1/675;
Secondary antibody: Goat anti rabbit IgG at 1/8000 dilution;
Exposure time: 20 seconds



Product Description

Pioneering GTPase and Oncogene Product Development since 2010
