

MAGEA4 RABBIT PAB

Cat.#: S216225

Product Name: Anti-MAGEA4 Rabbit Polyclonal Antibody

Synonyms: CT1.4, MAGE-41, MAGE-X2, MAGE4, MAGE4A, MAGE4B, MGC21336

UNIPROT ID: P43358 (Gene Accession - BC017723)

Background: This gene is a member of the MAGEA gene family. The members of this family encode proteins with 50 to 80% sequence identity to each other. The promoters and first exons of the MAGEA genes show considerable variability, suggesting that the existence of this gene family enables the same function to be expressed under different transcriptional controls. The MAGEA genes are clustered at chromosomal location Xq28. They have been implicated in some hereditary disorders, such as dyskeratosis congenita. At least four variants encoding the same protein have been found for this gene.

Immunogen: Fusion protein of human MAGEA4

Applications: ELISA, IHC

Recommended Dilutions: IHC: Oct-50; ELISA: 500-2000

Host Species: Rabbit

Clonality: Rabbit Polyclonal

Isotype: Immunogen-specific rabbit IgG

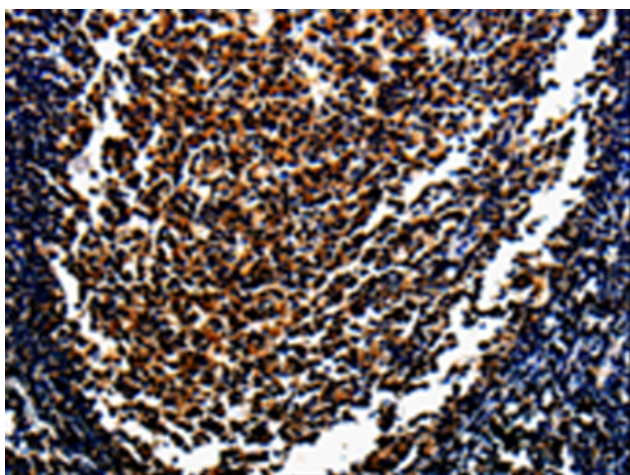
Purification: Antigen affinity purification

Species Reactivity: Human

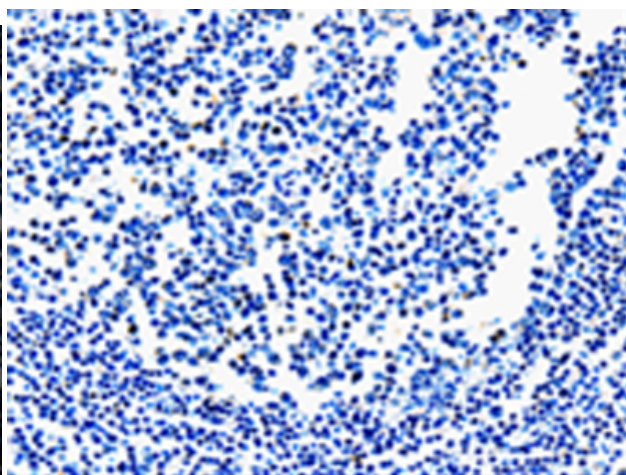
Constituents: PBS (without Mg²⁺ and Ca²⁺), pH 7.4, 150 mM NaCl, 0.05% Sodium Azide and 40% glycerol

Research Areas: Cancer

Storage & Shipping: Store at -20°C. Avoid repeated freezing and thawing



Immunohistochemistry analysis of paraffin embedded Human tonsil tissue using 216225(MAGEA4 Antibody) at a dilution of 1/10(Cytoplasm).



In comparison with the IHC on the left, the same paraffin-embedded Human tonsil tissue is first treated with the fusion protein and then with 216225(Anti-MAGEA4 Antibody) at dilution 1/10.