

MAGEB3 RABBIT PAB

Cat.#: S220689

Product Name: Anti-MAGEB3 Rabbit Polyclonal Antibody

Synonyms: CT3.5

UNIPROT ID: O15480 (Gene Accession - NP_002356)

Background: This gene is a MAGE-B subfamily member of the MAGE gene family. MAGE family member proteins direct the expression of tumor antigens recognized on a human melanoma by autologous cytolytic T lymphocytes. There are two known clusters of MAGE genes on chromosome X. The members of the MAGE-A subfamily are located in the Xq28 region, while the members of the MAGE-B subfamily are clustered in the Xp21 region.

Immunogen: Synthetic peptide of human MAGEB3

Applications: ELISA, WB, IHC

Recommended Dilutions: IHC: 25-100;WB: 200-1000;ELISA: 1000-2000

Host Species: Rabbit

Clonality: Rabbit Polyclonal

Isotype: Immunogen-specific rabbit IgG

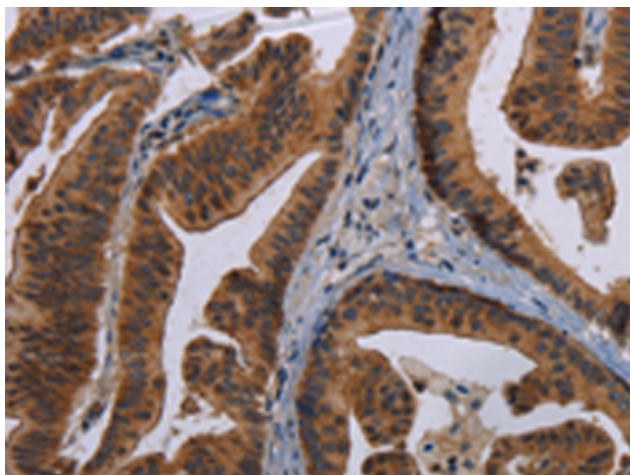
Purification: Antigen affinity purification

Species Reactivity: Human

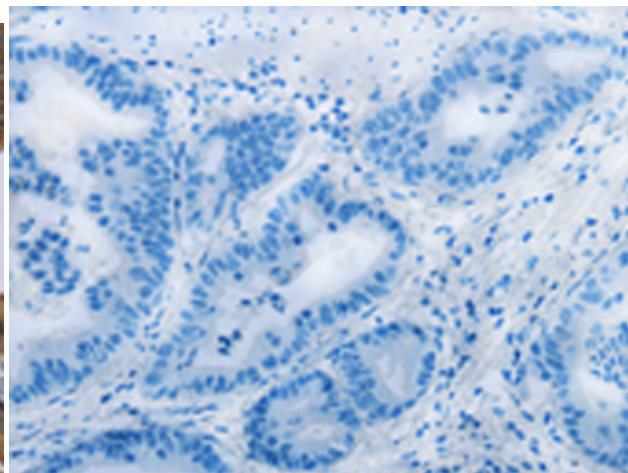
Constituents: PBS (without Mg²⁺ and Ca²⁺), pH 7.4, 150 mM NaCl, 0.05% Sodium Azide and 40% glycerol

Research Areas: Cancer

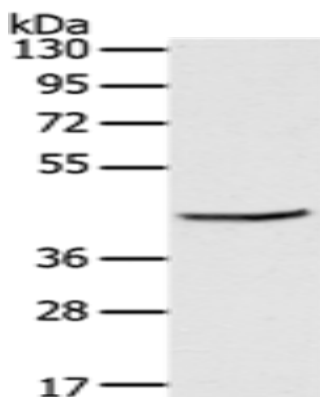
Storage & Shipping: Store at -20°C. Avoid repeated freezing and thawing



Immunohistochemistry analysis of paraffin embedded Human gastric cancer tissue using 220689(MAGEB3 Antibody) at a dilution of 1/20(Cytoplasm).



In comparison with the IHC on the left, the same paraffin-embedded Human gastric cancer tissue is first treated with the synthetic peptide and then with 220689(Anti-MAGEB3 Antibody) at dilution 1/20.



Gel: 8%SDS-PAGE, Lysate: 40 μ g;
Lane: A549 cells;
Primary antibody: 220689(MAGEB3 Antibody) at dilution 1/200;
Secondary antibody: Goat anti rabbit IgG at 1/8000 dilution;
Exposure time: 10 seconds