

## MAGEC2 RABBIT MAB

**Cat.#:** N261642

**Product Name:** Anti-MAGEC2 Rabbit Monoclonal Antibody

**Synonyms:** CT10,MAGE-C2 antigen,MAGE-E1 antigen,MAGEC2,HCA587, MAGEE1

**UNIPROT ID:** Q9UBF1

**Background:** Proposed to enhance ubiquitin ligase activity of RING-type zinc finger-containing E3 ubiquitin-protein ligases.

**Immunogen:** Recombinant protein of human MAGEE1

**Applications:** WB,IHC-P,IP

**Recommended Dilutions:** WB: 1/500-1/1000 IHC: 1/50-1/100 IP: 1/20

**Host Species:** Rabbit

**Clonality:** Rabbit Monoclonal

**Clone ID:** R04-1B9

**MW:** Calculated MW: 41 kDa; Observed MW: 55 kDa

**Isotype:** IgG

**Purification:** Affinity Purified

**Species Reactivity:** Human,Mouse

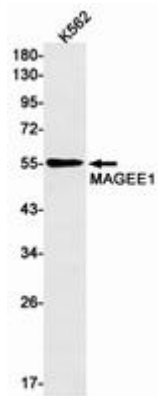
**Conjugation:** Unconjugated

**Modification:** Unmodified

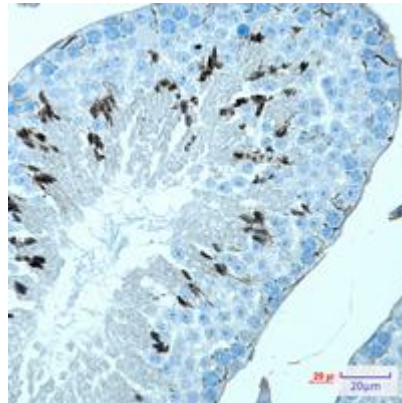
**Constituents:** PBS (without Mg<sup>2+</sup> and Ca<sup>2+</sup>), pH 7.3 containing 50% glycerol, 0.5% BSA and 0.02% sodium azide

**Research Areas:** -

**Storage & Shipping:** Store at -20°C. Avoid repeated freezing and thawing



Western blot analysis of MAGEE1 in K562 lysates using MAGEE1 antibody.



Immunohistochemistry analysis of paraffin-embedded mouse testis using MAGEE1 antibody. High-pressure and temperature Sodium Citrate pH 6.0 was used for antigen retrieval.