

## MAGEC2 RABBIT PAB

**Cat.#:** S219092

**Product Name:** Anti-MAGEC2 Rabbit Polyclonal Antibody

**Synonyms:** CT10; HCA587; MAGEE1

**UNIPROT ID:** Q9UBF1 (Gene Accession - BC013318 )

**Background:** This gene is a member of the MAGEC gene family. It is not expressed in normal tissues, except for testis, and is expressed in tumors of various histological types. This gene and the other MAGEC genes are clustered on chromosome Xq26-q27.

**Immunogen:** Fusion protein of human MAGEC2

**Applications:** ELISA, WB, IHC

**Recommended Dilutions:** IHC: 50-300;WB: 1000-5000;ELISA: 5000-10000

**Host Species:** Rabbit

**Clonality:** Rabbit Polyclonal

**Isotype:** Immunogen-specific rabbit IgG

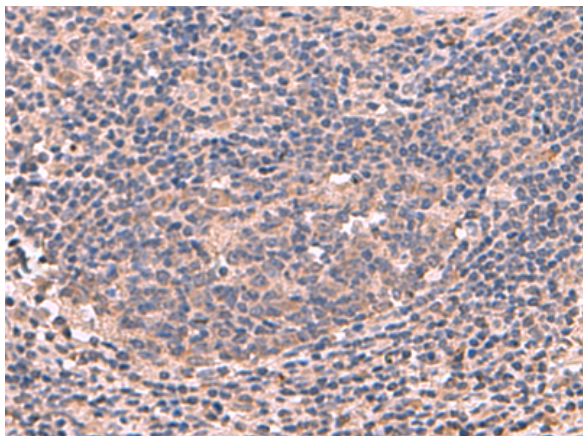
**Purification:** Antigen affinity purification

**Species Reactivity:** Human

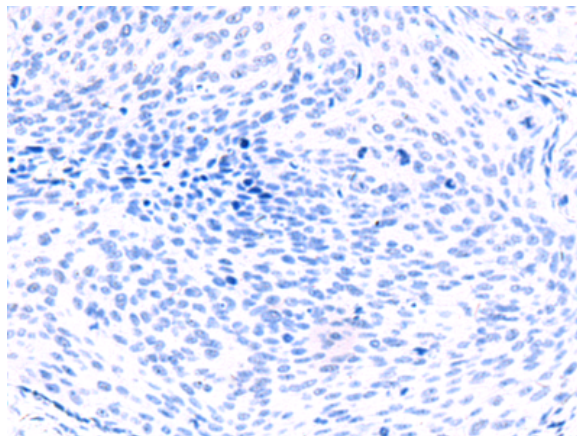
**Constituents:** PBS (without Mg<sup>2+</sup> and Ca<sup>2+</sup>), pH 7.4, 150 mM NaCl, 0.05% Sodium Azide and 40% glycerol

**Research Areas:** Cancer

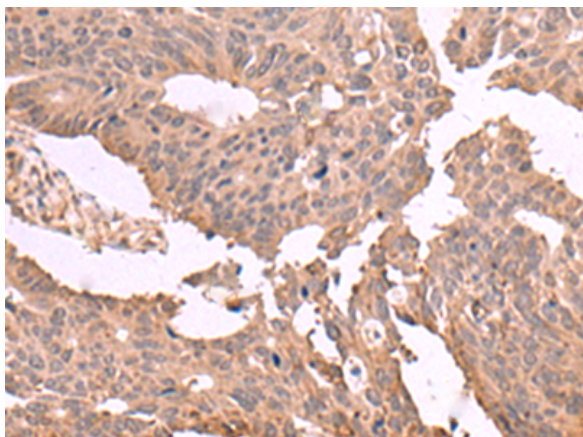
**Storage & Shipping:** Store at -20°C. Avoid repeated freezing and thawing



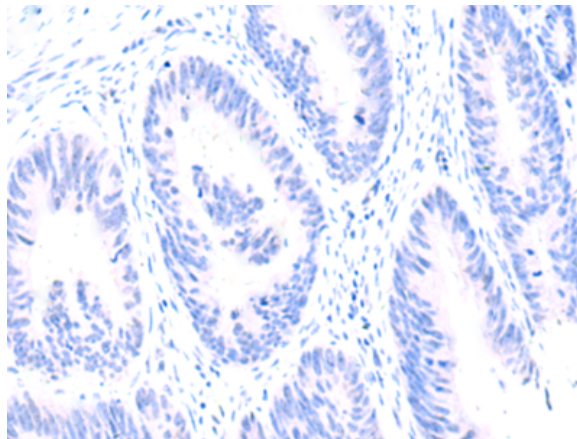
Immunohistochemistry analysis of paraffin embedded Human cervical cancer tissue using 219092(MAGEC2 Antibody) at a dilution of 1/60(Cytoplasm).



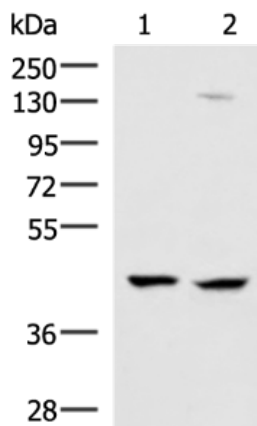
In comparison with the IHC on the left, the same paraffin-embedded Human cervical cancer tissue is first treated with the fusion protein and then with 219092(Anti-MAGEC2 Antibody) at dilution 1/60.



The image on the left is immunohistochemistry of paraffin-embedded Human colorectal cancer tissue using 219092(Anti-MAGEC2 Antibody) at a dilution of 1/60.



In comparison with the IHC on the left, the same paraffin-embedded Human colorectal cancer tissue is first treated with fusion protein and then with D225818(Anti-MAGEC2 Antibody) at dilution 1/60.



Gel: 8%SDS-PAGE, Lysate: 40 µg;  
 Lane 1-2: 293T and Jurkat cell lysates;  
 Primary antibody: 219092(MAGEC2 Antibody) at dilution 1/850;  
 Secondary antibody: HRP-conjugated Goat anti rabbit IgG at 1/5000 dilution;  
 Exposure time: 1 minute



# Product Description

Pioneering GTPase and Oncogene Product Development since 2010

---