

## MAN1B1 RABBIT PAB

**Cat.#:** S218908

**Product Name:** Anti-MAN1B1 Rabbit Polyclonal Antibody

**Synonyms:** MRT15; ERMAN1; ERMan1; MANA-ER

**UNIPROT ID:** Q9UKM7 (Gene Accession - BC002953 )

**Background:** This gene encodes an enzyme belonging to the glycosyl hydrolase 47 family. This enzyme functions in N-glycan biosynthesis, and is a class I alpha-1,2-mannosidase that specifically converts Man9GlcNAc to Man8GlcNAc isomer B. It is required for N-glycan trimming to Man5-6GlcNAc2 in the endoplasmic-reticulum-associated degradation pathway. Mutations in this gene cause autosomal-recessive intellectual disability. Alternative splicing results in multiple transcript variants. A related pseudogene has been identified on chromosome 11.

**Immunogen:** Fusion protein of human MAN1B1

**Applications:** ELISA, WB, IHC

**Recommended Dilutions:** IHC: 50-100;WB: 500-2000;ELISA: 5000-10000

**Host Species:** Rabbit

**Clonality:** Rabbit Polyclonal

**Isotype:** Immunogen-specific rabbit IgG

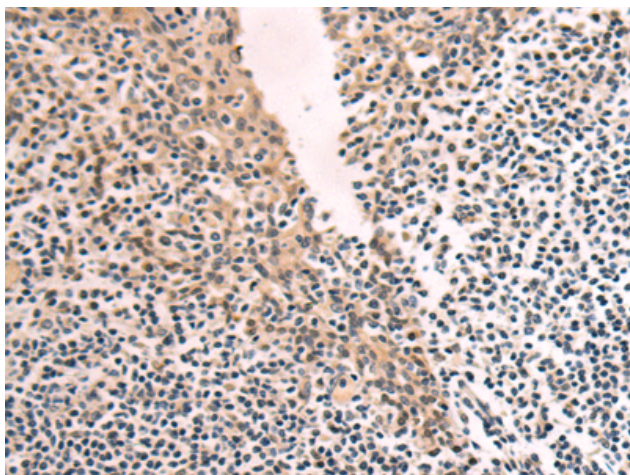
**Purification:** Antigen affinity purification

**Species Reactivity:** Human, Mouse, Rat

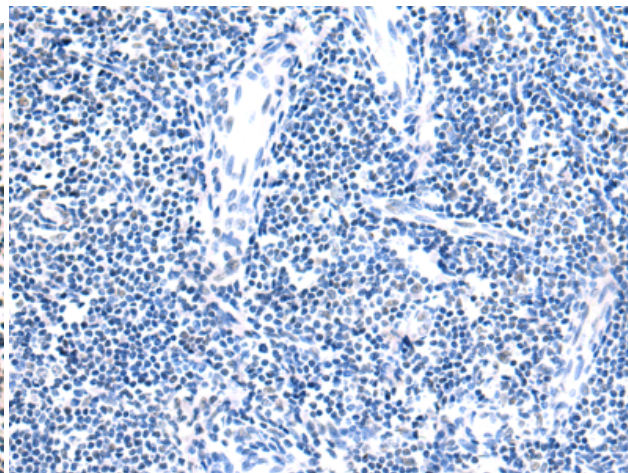
**Constituents:** PBS (without Mg<sup>2+</sup> and Ca<sup>2+</sup>), pH 7.4, 150 mM NaCl, 0.05% Sodium Azide and 40% glycerol

**Research Areas:** Cell Biology

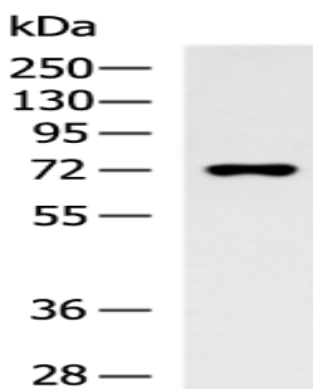
**Storage & Shipping:** Store at -20°C. Avoid repeated freezing and thawing



Immunohistochemistry analysis of paraffin embedded Human tonsil tissue using 218908(MAN1B1 Antibody) at a dilution of 1/145(Cytoplasm).



In comparison with the IHC on the left, the same paraffin-embedded Human tonsil tissue is first treated with the fusion protein and then with 218908(Anti-MAN1B1 Antibody) at dilution 1/145.



Gel: 8%SDS-PAGE, Lysate: 40  $\mu$ g;  
Lane: HL-60 cell lysate;  
Primary antibody: 218908(MAN1B1 Antibody) at dilution 1/800;  
Secondary antibody: HRP-conjugated Goat anti rabbit IgG at 1/5000 dilution;  
Exposure time: 1 minute