

## MANNOSE RECEPTOR RABBIT PAB

**Cat.#:** N225075

**Product Name:** Anti-Mannose Receptor Rabbit pAb

**Synonyms:** MRC1; CLEC13D; CLEC13DL; MRC1L1; Macrophage mannose receptor 1; MMR; C-type lectin domain family 13 member D; C-type lectin domain family 13 member D-like; Macrophage mannose receptor 1-like protein 1; CD antigen CD206

**UNIPROT ID:** P22897

**Background:** Mediates the endocytosis of glycoproteins by macrophages. Binds both sulfated and non-sulfated polysaccharide chains. (Microbial infection) Acts as phagocytic receptor for bacteria, fungi and other pathogens. Acts as a receptor for Dengue virus envelope protein E (PubMed:18266465). Interacts with hepatitis B virus envelope protein (PubMed:19683778).

**Immunogen:** The antiserum was produced against synthesized peptide derived from the Internal region of human MRC1. AA range:341-390

**Applications:** WB,IHC-P,ELISA

**Recommended Dilutions:** WB: 1/500-1/1000 IHC: 1/50-1/100 ELISA: 1/10000

**Host Species:** Rabbit

**Clonality:** Rabbit Polyclonal

**Clone ID:** -

**MW:** Calculated MW: 166 kDa; Observed MW: 170 kDa

**Isotype:** IgG

**Purification:** Affinity Purified

**Species Reactivity:** Human

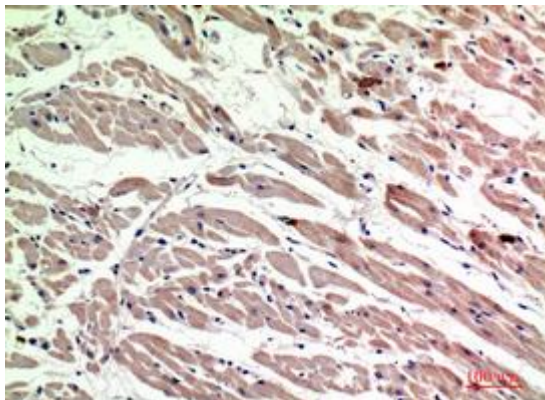
**Conjugation:** Unconjugated

**Modification:** Unmodified

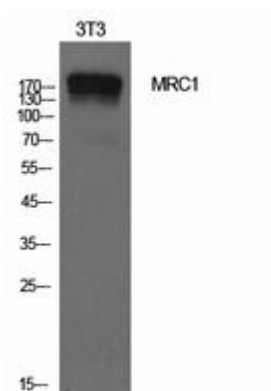
**Constituents:** PBS (without Mg<sup>2+</sup> and Ca<sup>2+</sup>), pH 7.3 containing 50% glycerol, 0.5% BSA and 0.02% sodium azide

**Research Areas:** Immunology

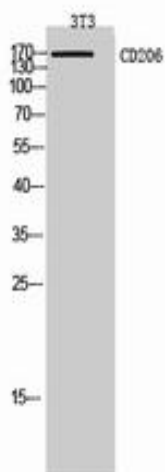
**Storage & Shipping:** Store at -20°C. Avoid repeated freezing and thawing



Immunohistochemistry analysis of paraffin-embedded Human heart using Mannose Receptor antibody. High-pressure and temperature Sodium Citrate pH 6.0 was used for antigen retrieval.



Western blot analysis of Mannose Receptor in NIH3T3 lysates using Mannose Receptor antibody.



Western blot analysis of Mannose Receptor in 3T3 lysates using CD206 antibody.