

## MAP1B RABBIT PAB

**Cat.#:** S220220

**Product Name:** Anti-MAP1B Rabbit Polyclonal Antibody

**Synonyms:** MAP5; FUTSCH

**UNIPROT ID:** P46821 (Gene Accession - NP\_005900 )

**Background:** This gene encodes a protein that belongs to the microtubule-associated protein family. The proteins of this family are thought to be involved in microtubule assembly, which is an essential step in neurogenesis. The product of this gene is a precursor polypeptide that presumably undergoes proteolytic processing to generate the final MAP1B heavy chain and LC1 light chain. Gene knockout studies of the mouse microtubule-associated protein 1B gene suggested an important role in development and function of the nervous system.

**Immunogen:** Synthetic peptide of human MAP1B

**Applications:** ELISA, IHC

**Recommended Dilutions:** IHC: 50-200; ELISA: 3000-10000

**Host Species:** Rabbit

**Clonality:** Rabbit Polyclonal

**Isotype:** Immunogen-specific rabbit IgG

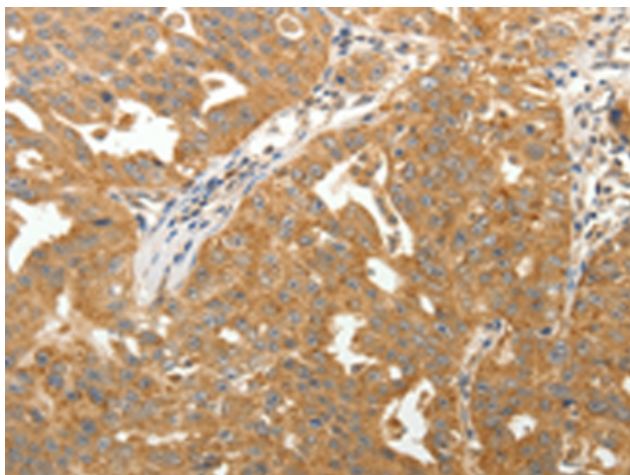
**Purification:** Antigen affinity purification

**Species Reactivity:** Human, Mouse, Rat

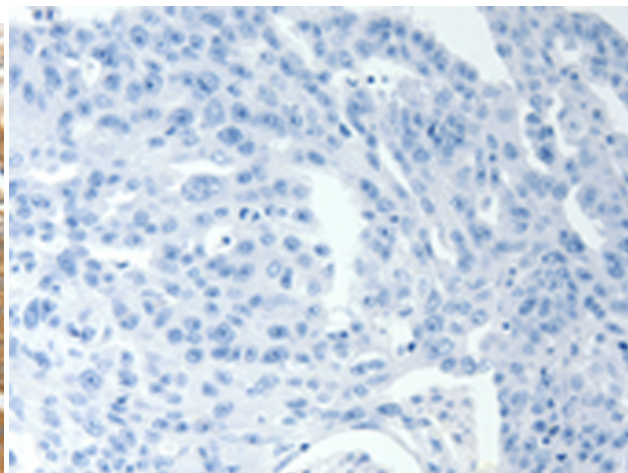
**Constituents:** PBS (without Mg<sup>2+</sup> and Ca<sup>2+</sup>), pH 7.4, 150 mM NaCl, 0.05% Sodium Azide and 40% glycerol

**Research Areas:** Signal Transduction, Neuroscience

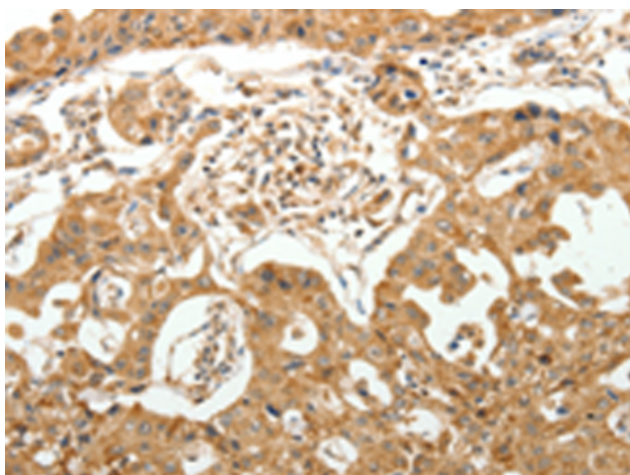
**Storage & Shipping:** Store at -20°C. Avoid repeated freezing and thawing



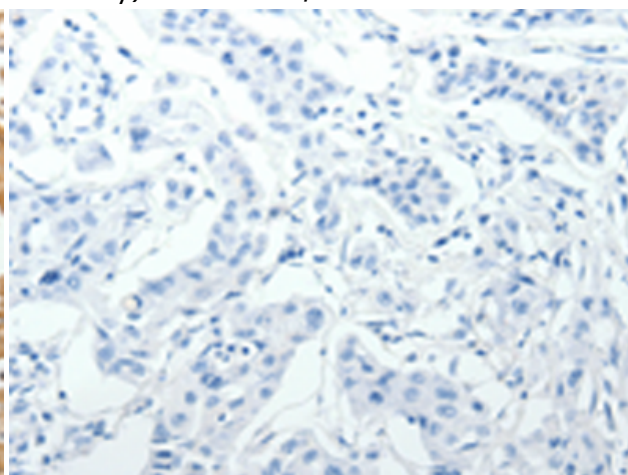
Immunohistochemistry analysis of paraffin embedded Human ovarian cancer tissue using 220220 (MAPIB Antibody) at a dilution of 1/40 (Cytoplasm).



In comparison with the IHC on the left, the same paraffin-embedded Human ovarian cancer tissue is first treated with the synthetic peptide and then with 220220 (Anti-MAPIB Antibody) at dilution 1/40.



The image on the left is immunohistochemistry of paraffin-embedded Human lung cancer tissue using 220220 (Anti-MAPIB Antibody) at a dilution of 1/40.



In comparison with the IHC on the left, the same paraffin-embedded Human lung cancer tissue is first treated with synthetic peptide and then with D261160 (Anti-MAPIB Antibody) at dilution 1/40.