

MAP2K5 RABBIT PAB

Cat.#: S210503

Product Name: Anti-MAP2K5 Rabbit Polyclonal Antibody

Synonyms: MEK5, MAPKK5, PRKMK5, HsT17454

UNIPROT ID: Q13163 (Gene Accession - BC008838)

Background: The protein encoded by this gene is a dual specificity protein kinase that belongs to the MAP kinase kinase family. This kinase specifically interacts with and activates MAPK7/ERK5. This kinase itself can be phosphorylated and activated by MAP3K3/MEKK3, as well as by atypical protein kinase C isoforms (αPKCs). The signal cascade mediated by this kinase is involved in growth factor stimulated cell proliferation and muscle cell differentiation. Three alternatively spliced transcript variants of this gene encoding distinct isoforms have been described.

Immunogen: Fusion protein of human MAP2K5

Applications: ELISA, IHC

Recommended Dilutions: IHC: 50-200; ELISA: 2000-5000

Host Species: Rabbit

Clonality: Rabbit Polyclonal

Isotype: Immunogen-specific rabbit IgG

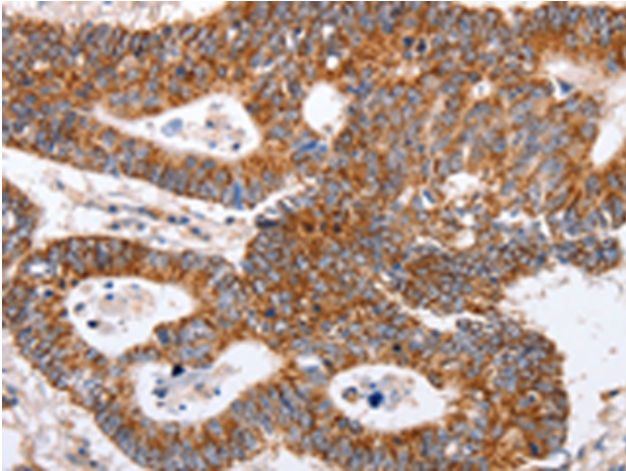
Purification: Antigen affinity purification

Species Reactivity: Human, Mouse, Rat

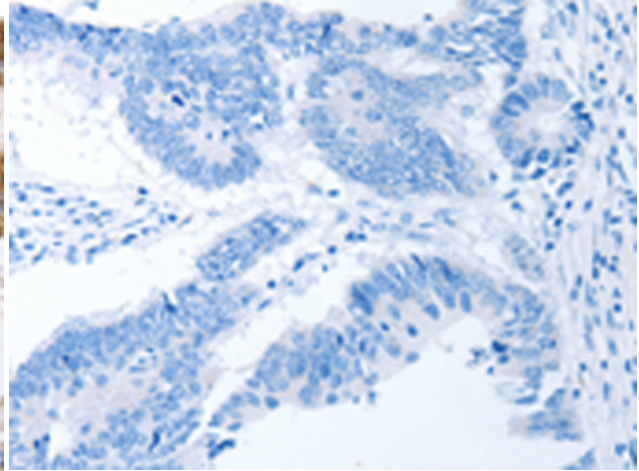
Constituents: PBS (without Mg²⁺ and Ca²⁺), pH 7.4, 150 mM NaCl, 0.05% Sodium Azide and 40% glycerol

Research Areas: Signal Transduction, Cardiovascular

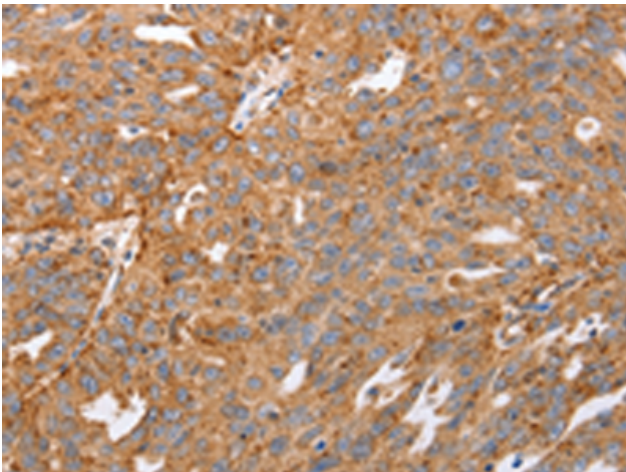
Storage & Shipping: Store at -20°C. Avoid repeated freezing and thawing



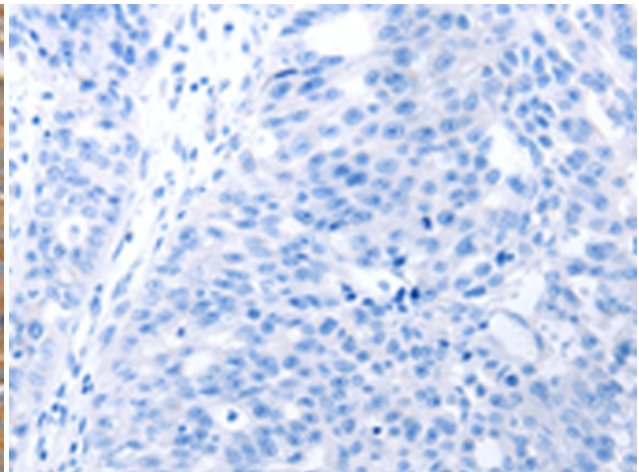
Immunohistochemistry analysis of paraffin embedded Human colon cancer tissue using 210503(MAP2K5 Antibody) at a dilution of 1/40(Cytoplasm).



In comparison with the IHC on the left, the same paraffin-embedded Human colon cancer tissue is first treated with the fusion protein and then with 210503(Anti-MAP2K5 Antibody) at dilution 1/40.



The image on the left is immunohistochemistry of paraffin-embedded Human ovarian cancer tissue using 210503(Anti-MAP2K5 Antibody) at a dilution of 1/40.



In comparison with the IHC on the left, the same paraffin-embedded Human ovarian cancer tissue is first treated with fusion protein and then with D121084(Anti-MAP2K5 Antibody) at dilution 1/40.