

MAP2K6 (8A11) MOUSE MAB

Cat.#: N261158

Product Name: Anti-MAP2K6 (8A11) Mouse Monoclonal Antibody

Synonyms: MAP2K6; MEK6; MKK6; PRKMK6; SKK3; Dual specificity mitogen-activated protein kinase kinase 6; MAP kinase kinase 6; MAPKK 6; MAPK/ERK kinase 6; MEK 6; Stress-activated protein kinase kinase 3; SAPK kinase 3; SAPKK-3; SAPKK3

UNIPROT ID: P52564

Background: This gene encodes a member of the dual specificity protein kinase family, which functions as a mitogen-activated protein (MAP) kinase kinase. MAP kinases, also known as extracellular signal-regulated kinases (ERKs), act as an integration point for multiple biochemical signals. This protein phosphorylates and activates p38 MAP kinase in response to inflammatory cytokines or environmental stress. As an essential component of p38 MAP kinase mediated signal transduction pathway, this gene is involved in many cellular processes such as stress induced cell cycle arrest, transcription activation and apoptosis. Tissue specificity: Isoform 2 is only expressed in skeletal muscle. Isoform 1, on the other hand, is found in skeletal muscle, heart, and in lesser extent in liver or pancreas.

Immunogen: Purified recombinant human MKK6 protein fragments expressed in E.coli.

Applications: WB,IP

Recommended Dilutions: WB: 1/500-1/1000 IP: 1/20

Host Species: Mouse

Clonality: Mouse Monoclonal

Clone ID: 8A11-G11-G11

MW: Calculated MW: 37 kDa; Observed MW: 40 kDa

Isotype: IgG1

Purification: Affinity Purified

Species Reactivity: Human,Rat

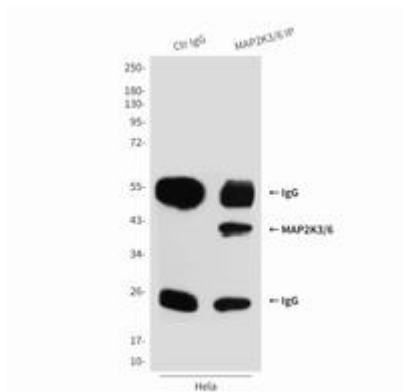
Conjugation: Unconjugated

Modification: Unmodified

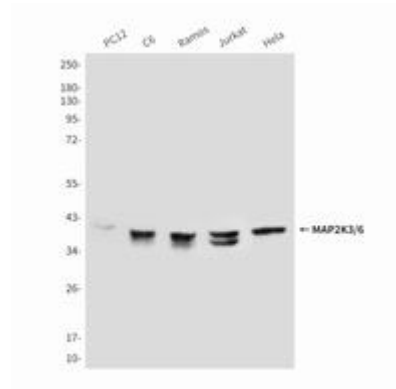
Constituents: PBS (without Mg²⁺ and Ca²⁺), pH 7.3 containing 50% glycerol, 0.5% BSA and 0.02% sodium azide

Research Areas: Signal Transduction

Storage & Shipping: Store at -20°C. Avoid repeated freezing and thawing



Immunoprecipitation analysis of MAP2K6 (8A11) in HeLa lysates using MKK3/6 antibody.



Western blot analysis of MAP2K6 (8A11) in PC-12, C6, Ramos, Jurkat and HeLa lysates using MKK3/6 antibody.