

## MAP3K2 RABBIT PAB

**Cat.#:** S213834

**Product Name:** Anti-MAP3K2 Rabbit Polyclonal Antibody

**Synonyms:** MEKK2; MEKK2B

**UNIPROT ID:** Q9Y2U5 (Gene Accession - NP\_006600 )

**Background:** The protein encoded by this gene is a member of serine/threonine protein kinase family. This kinase preferentially activates other kinases involved in the MAP kinase signaling pathway. This kinase has been shown to directly phosphorylate and activate I $\kappa$ B kinases, and thus plays a role in NF- $\kappa$ B signaling pathway. This kinase has also been found to bind and activate protein kinase C-related kinase 2, which suggests its involvement in a regulated signaling process. [provided by RefSeq, Jul 2008]

**Immunogen:** Synthetic peptide of human MAP3K2

**Applications:** ELISA, IHC

**Recommended Dilutions:** IHC: 50-200; ELISA: 5000-10000

**Host Species:** Rabbit

**Clonality:** Rabbit Polyclonal

**Isotype:** Immunogen-specific rabbit IgG

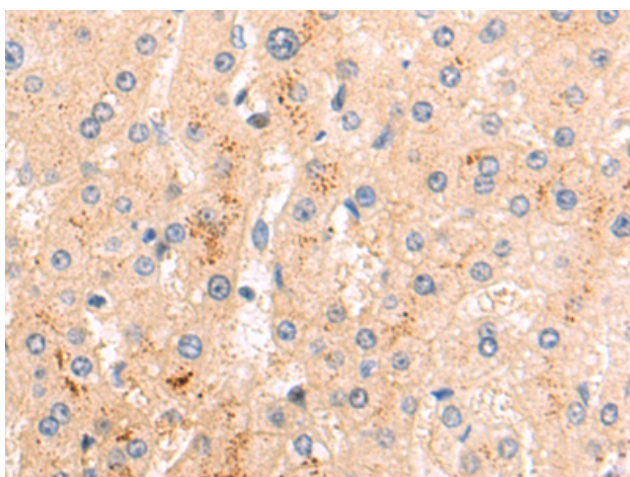
**Purification:** Antigen affinity purification

**Species Reactivity:** Human, Mouse

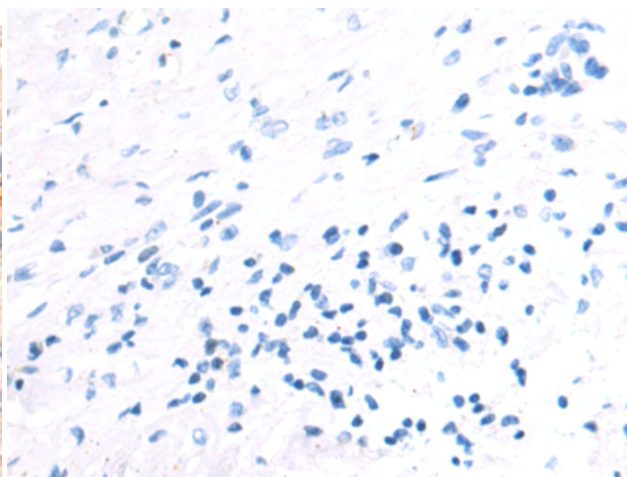
**Constituents:** PBS (without Mg<sup>2+</sup> and Ca<sup>2+</sup>), pH 7.4, 150 mM NaCl, 0.05% Sodium Azide and 40% glycerol

**Research Areas:** Signal Transduction

**Storage & Shipping:** Store at -20°C. Avoid repeated freezing and thawing



Immunohistochemistry analysis of paraffin embedded Human liver cancer tissue using 213834(MAP3K2 Antibody) at a dilution of 1/50(Cytoplasm).



In comparison with the IHC on the left, the same paraffin-embedded Human liver cancer tissue is first treated with the synthetic peptide and then with 213834(Anti-MAP3K2 Antibody) at dilution 1/50.