

MAP3K20 RABBIT PAB

Cat.#: S213309

Product Name: Anti-MAP3K20 Rabbit Polyclonal Antibody

Synonyms: pk; AZK; MLT; MRK; ZAK; CNM6; MLK7; MLTK; SFMMP; mlklak; MLTKbeta; MLTKalpha

UNIPROT ID: Q9NYL2 (Gene Accession - NP_057737)

Background: This gene is a member of the MAPKKK family of signal transduction molecules and encodes a protein with an N-terminal kinase catalytic domain, followed by a leucine zipper motif and a sterile-alpha motif (SAM). This magnesium-binding protein forms homodimers and is located in the cytoplasm. The protein mediates gamma radiation signaling leading to cell cycle arrest and activity of this protein plays a role in cell cycle checkpoint regulation in cells. The protein also has pro-apoptotic activity. Alternate transcriptional splice variants, encoding different isoforms, have been characterized. [provided by RefSeq, Jul 2008]

Immunogen: Synthetic peptide of human MAP3K20

Applications: ELISA, IHC

Recommended Dilutions: IHC: 50-200; ELISA: 2000-5000

Host Species: Rabbit

Clonality: Rabbit Polyclonal

Isotype: Immunogen-specific rabbit IgG

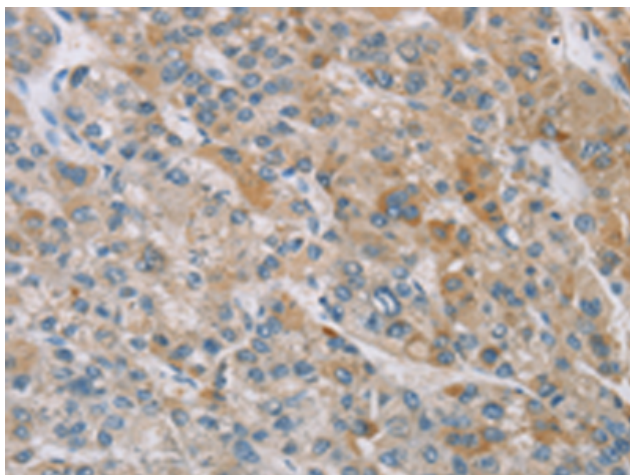
Purification: Antigen affinity purification

Species Reactivity: Human, Mouse

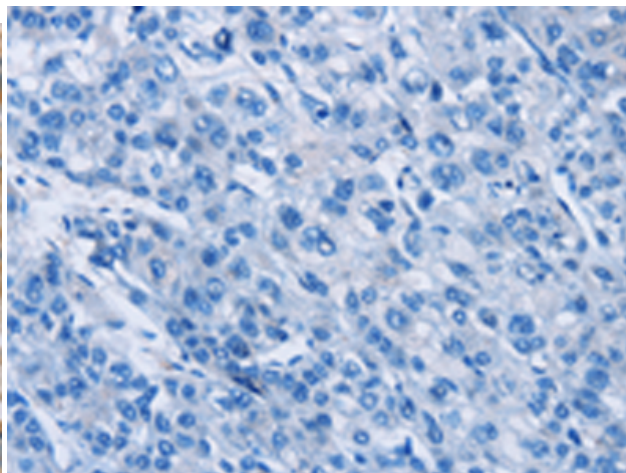
Constituents: PBS (without Mg²⁺ and Ca²⁺), pH 7.4, 150 mM NaCl, 0.05% Sodium Azide and 40% glycerol

Research Areas: Signal Transduction

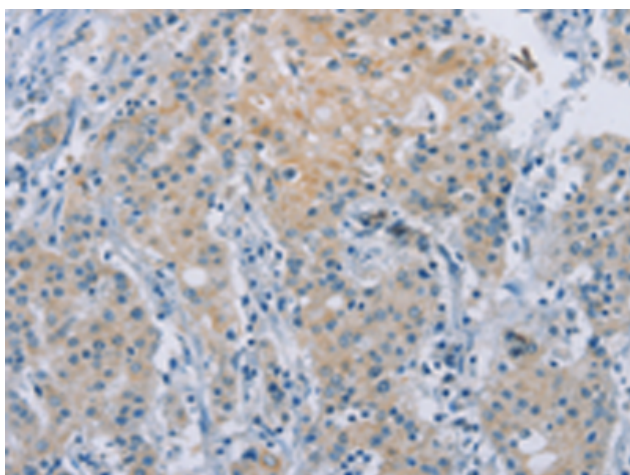
Storage & Shipping: Store at -20°C. Avoid repeated freezing and thawing



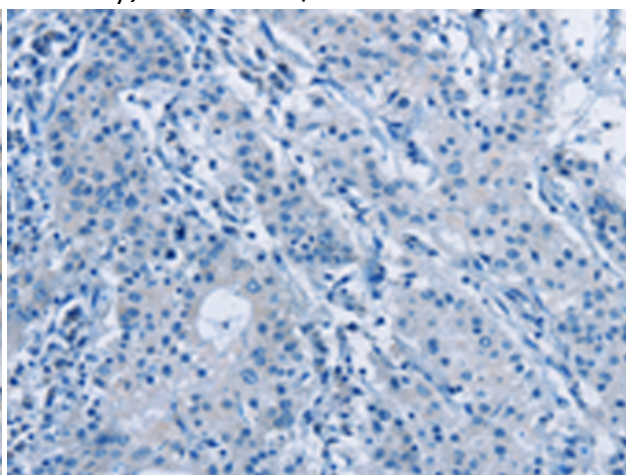
Immunohistochemistry analysis of paraffin embedded Human liver cancer tissue using 213309 (MAP3K20 Antibody) at a dilution of 1/100 (Cytoplasm).



In comparison with the IHC on the left, the same paraffin-embedded Human liver cancer tissue is first treated with the synthetic peptide and then with 213309 (Anti-MAP3K20 Antibody) at dilution 1/100.



The image on the left is immunohistochemistry of paraffin-embedded Human gastric cancer tissue using 213309 (Anti-MAP3K20 Antibody) at a dilution of 1/100.



In comparison with the IHC on the left, the same paraffin-embedded Human gastric cancer tissue is first treated with synthetic peptide and then with D156005 (Anti-MAP3K20 Antibody) at dilution 1/100.