

MAP3K7 RABBIT PAB

Cat.#: S217879

Product Name: Anti-MAP3K7 Rabbit Polyclonal Antibody

Synonyms: CSCF; FMD2; TAK1; MEKK7; TGF1a

UNIPROT ID: O43318 (Gene Accession - BC017715)

Background: The protein encoded by this gene is a member of the serine/threonine protein kinase family. This kinase mediates the signaling transduction induced by TGF beta and morphogenetic protein (BMP), and controls a variety of cell functions including transcription regulation and apoptosis. In response to IL-1, this protein forms a kinase complex including TRAF6, MAP3K7P1/TAB1 and MAP3K7P2/TAB2; this complex is required for the activation of nuclear factor kappa B. This kinase can also activate MAPK8/JNK, MAP2K4/MKK4, and thus plays a role in the cell response to environmental stresses. Four alternatively spliced transcript variants encoding distinct isoforms have been reported.

Immunogen: Fusion protein of human MAP3K7

Applications: ELISA, WB, IHC

Recommended Dilutions: IHC: 200-300;WB: 500-2000;ELISA: 5000-10000

Host Species: Rabbit

Clonality: Rabbit Polyclonal

Isotype: Immunogen-specific rabbit IgG

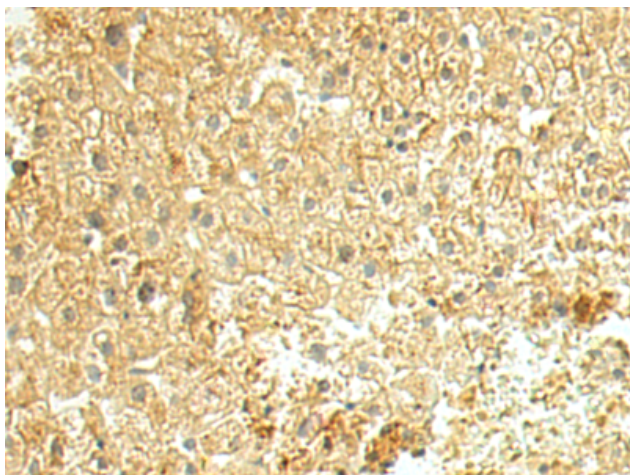
Purification: Antigen affinity purification

Species Reactivity: Human, Mouse, Rat

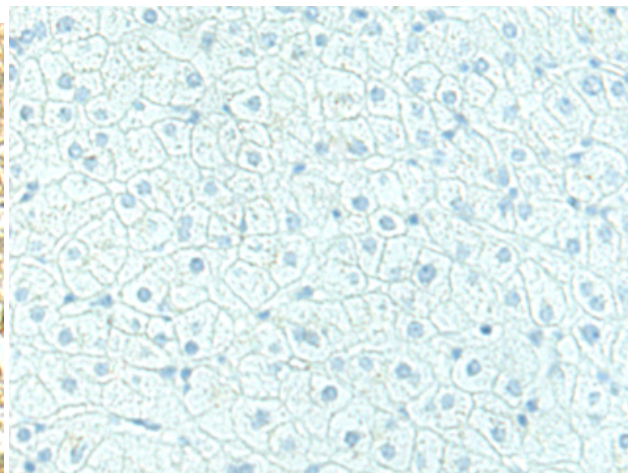
Constituents: PBS (without Mg²⁺ and Ca²⁺), pH 7.4, 150 mM NaCl, 0.05% Sodium Azide and 40% glycerol

Research Areas: Signal Transduction, Cardiovascular, Immunology

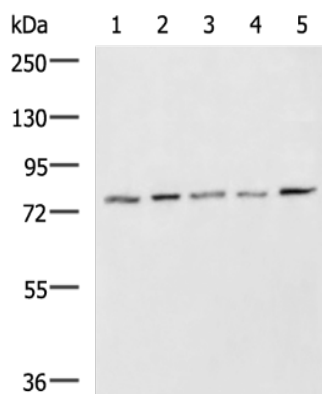
Storage & Shipping: Store at -20°C. Avoid repeated freezing and thawing



Immunohistochemistry analysis of paraffin embedded Human liver cancer tissue using 217879 (MAP3K7 Antibody) at a dilution of 1/150 (Cytoplasm).



In comparison with the IHC on the left, the same paraffin-embedded Human liver cancer tissue is first treated with the fusion protein and then with 217879 (Anti-MAP3K7 Antibody) at dilution 1/150.



Gel: 8% SDS-PAGE, Lysate: 40 μ g;
 Lane 1-5: 231, 293T, HepG2, Jurkat and K562 cell lysates;
 Primary antibody: 217879 (MAP3K7 Antibody) at dilution 1/1000;
 Secondary antibody: HRP-conjugated Goat anti rabbit IgG at 1/5000 dilution;
 Exposure time: 1 minute