

MAP4K1 RABBIT PAB

Cat.#: S220006

Product Name: Anti-MAP4K1 Rabbit Polyclonal Antibody

Synonyms: HPK1

UNIPROT ID: Q92918 (Gene Accession - NP_009112.1)

Background: This gene belongs to the protein kinase superfamily, STE Ser/Thr protein kinase family, STE20 subfamily. It plays a role in the response to environmental stress and hematopoietic lineage decisions and growth regulation. Appears to act upstream of the JUN N-terminal pathway.

Immunogen: Synthetic peptide of human MAP4K1

Applications: ELISA, IHC

Recommended Dilutions: IHC: 25-100; ELISA: 1000-5000

Host Species: Rabbit

Clonality: Rabbit Polyclonal

Isotype: Immunogen-specific rabbit IgG

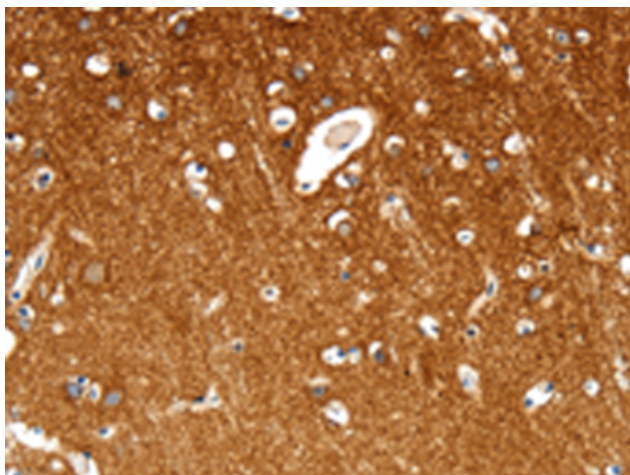
Purification: Antigen affinity purification

Species Reactivity: Human

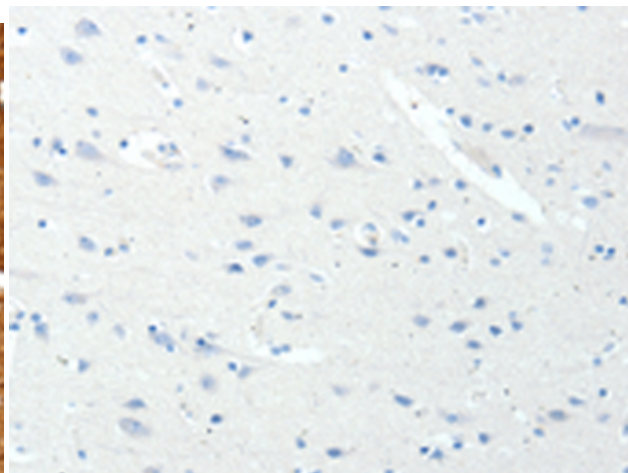
Constituents: PBS (without Mg²⁺ and Ca²⁺), pH 7.4, 150 mM NaCl, 0.05% Sodium Azide and 40% glycerol

Research Areas: Signal Transduction

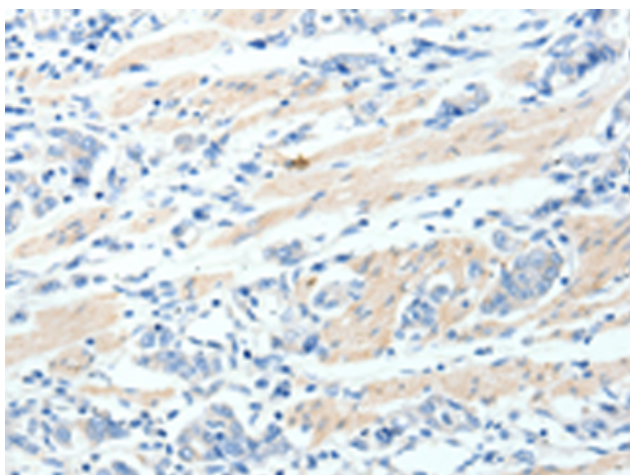
Storage & Shipping: Store at -20°C. Avoid repeated freezing and thawing



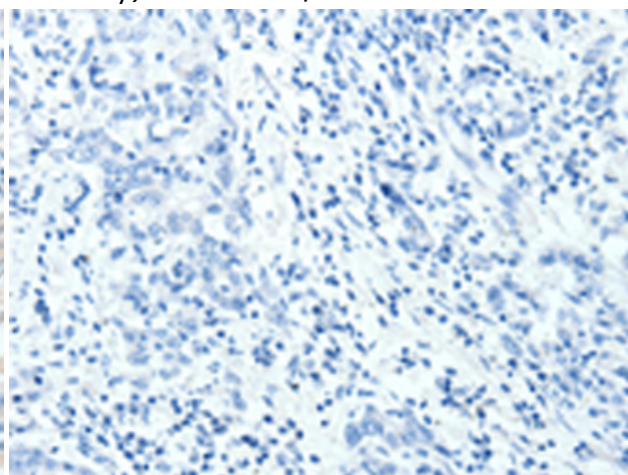
Immunohistochemistry analysis of paraffin-embedded Human brain tissue using 220006 (MAP4K1 Antibody) at a dilution of 1/30 (Cytoplasm).



In comparison with the IHC on the left, the same paraffin-embedded Human brain tissue is first treated with the synthetic peptide and then with 220006 (Anti-MAP4K1 Antibody) at dilution 1/30.



The image on the left is immunohistochemistry of paraffin-embedded Human gastric cancer tissue using 220006 (Anti-MAP4K1 Antibody) at a dilution of 1/30.



In comparison with the IHC on the left, the same paraffin-embedded Human gastric cancer tissue is first treated with synthetic peptide and then with D260765 (Anti-MAP4K1 Antibody) at dilution 1/30.