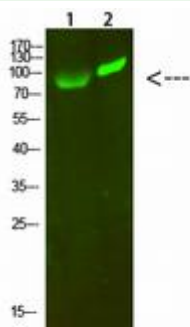


MAP4K2/3 RABBIT PAB**Cat.#:** N225234**Product Name:** Anti-MAP4K2/3 Rabbit pAb**Synonyms:** Mitogen-activated protein kinase kinase kinase 2; B lymphocyte serine/threonine-protein kinase; Germinal center kinase; GC kinase; MAPK/ERK kinase kinase 2; MEK kinase kinase 2; MEKKK 2; Rab8-interacting protein; Mitogen-activated protein kinase kinase kinase 3; Germinal center kinase-related protein kinase; GLK; MAPK/ERK kinase kinase kinase 3; MEK kinase kinase 3; MEKKK 3**UNIPROT ID:** Q12851/Q8IVH8**Background:** Serine/threonine-protein kinase which acts as an essential component of the MAP kinase signal transduction pathway. Acts as a MAPK kinase kinase (MAP4K) and is an upstream activator of the stress-activated protein kinase/c-Jun N-terminal kinase (SAP/JNK) signaling pathway and to a lesser extent of the p38 MAPKs signaling pathway.**Immunogen:** Synthesized peptide derived from human GCK/GLK. at AA range: 221-270**Applications:** WB,ELISA**Recommended Dilutions:** WB: 1/500-1/1000 ELISA: 1/10000**Host Species:** Rabbit**Clonality:** Rabbit Polyclonal**Clone ID:** -**MW:** Calculated MW: 92 kDa; Observed MW: 100 kDa**Isotype:** IgG**Purification:** Affinity Purified**Species Reactivity:** Human,Rat**Conjugation:** Unconjugated**Modification:** Unmodified**Constituents:** PBS (without Mg²⁺ and Ca²⁺), pH 7.3 containing 50% glycerol, 0.5% BSA and 0.02% sodium azide**Research Areas:** Signal Transduction**Storage & Shipping:** Store at -20°C. Avoid repeated freezing and thawing



Western blot analysis of MAP4K2/3 in 293T, HeLa lysates using MAP4K2/3 antibody.