

## MAP4K3 RABBIT PAB

**Cat.#:** S216827

**Product Name:** Anti-MAP4K3 Rabbit Polyclonal Antibody

**Synonyms:** GLK; MEKKK3; MEKKK 3; MAPKKKK3; RAB8IPL1

**UNIPROT ID:** Q8IVH8 (Gene Accession - BC071579 )

**Background:** This gene encodes a member of the mitogen-activated protein kinase kinase kinase family. The encoded protein activates key effectors in cell signalling, among them c-Jun. Alternatively spliced transcripts encoding multiple isoforms have been observed for this gene. May play a role in the response to environmental stress. Appears to act upstream of the JUN N-terminal pathway. Ubiquitously expressed in all tissues examined, with high levels in heart, brain, placenta, skeletal muscle, kidney and pancreas and lower levels in lung and liver.

**Immunogen:** Fusion protein of human MAP4K3

**Applications:** ELISA, WB, IHC

**Recommended Dilutions:** IHC: 25-100;WB: 500-2000;ELISA: 2000-5000

**Host Species:** Rabbit

**Clonality:** Rabbit Polyclonal

**Isotype:** Immunogen-specific rabbit IgG

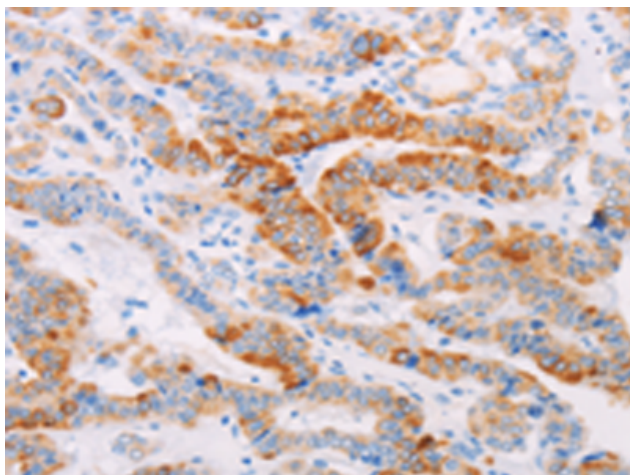
**Purification:** Antigen affinity purification

**Species Reactivity:** Human, Mouse, Rat

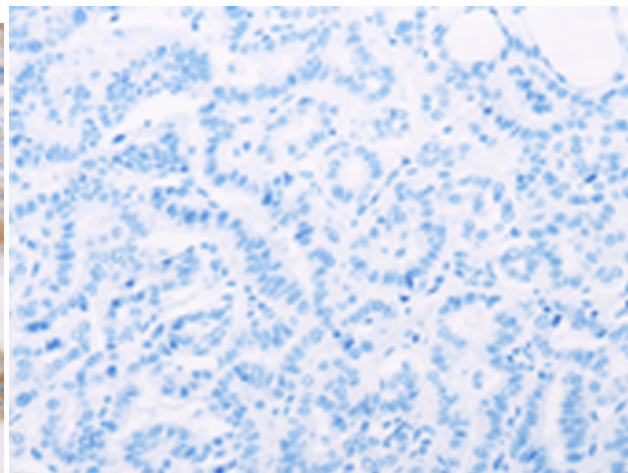
**Constituents:** PBS (without Mg<sup>2+</sup> and Ca<sup>2+</sup>), pH 7.4, 150 mM NaCl, 0.05% Sodium Azide and 40% glycerol

**Research Areas:** Signal Transduction

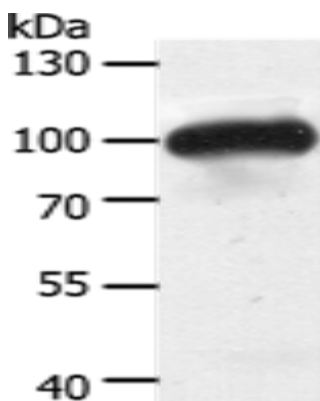
**Storage & Shipping:** Store at -20°C. Avoid repeated freezing and thawing



Immunohistochemistry analysis of paraffin embedded Human thyroid cancer tissue using 216827(MAP4K3 Antibody) at a dilution of 1/30(Cytoplasm).



In comparison with the IHC on the left, the same paraffin-embedded Human thyroid cancer tissue is first treated with the fusion protein and then with 216827(Anti-MAP4K3 Antibody) at dilution 1/30.



Gel: 10%SDS-PAGE, Lysate: 50 µg;  
Lane: Mouse heart tissue;  
Primary antibody: 216827(MAP4K3 Antibody)  
at dilution 1/400;  
Secondary antibody: Goat anti rabbit IgG at  
1/8000 dilution;  
Exposure time: 10 seconds