

MAPK11 RABBIT PAB

Cat.#: S220079

Product Name: Anti-MAPK11 Rabbit Polyclonal Antibody

Synonyms: P38B; SAPK2; p38-2; PRKM11; SAPK2B; p38Beta; P38BETA2

UNIPROT ID: Q15759 (Gene Accession - NP_002742)

Background: The protein encoded by this gene is a member of the MAP kinase family. MAP kinases act as an integration point for multiple biochemical signals, and are involved in a wide variety of cellular processes such as proliferation, differentiation, transcription regulation, and development. This kinase is most closely related to p38 MAP kinase, both of which can be activated by proinflammatory cytokines and environmental stress. This kinase is activated through its phosphorylation by MAP kinase kinases (MKKs), preferably by MKK6. Transcription factor ATF2/CREB2 has been shown to be a substrate of this kinase.

Immunogen: Synthetic peptide of human MAPK11

Applications: ELISA, IHC

Recommended Dilutions: IHC: 25-100; ELISA: 1000-2000

Host Species: Rabbit

Clonality: Rabbit Polyclonal

Isotype: Immunogen-specific rabbit IgG

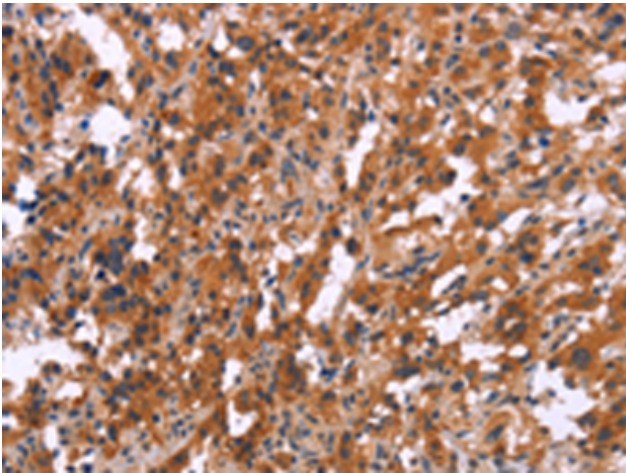
Purification: Antigen affinity purification

Species Reactivity: Human

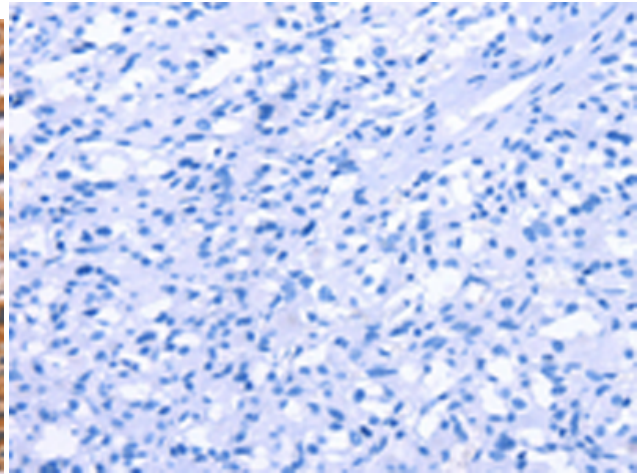
Constituents: PBS (without Mg²⁺ and Ca²⁺), pH 7.4, 150 mM NaCl, 0.05% Sodium Azide and 40% glycerol

Research Areas: Signal Transduction

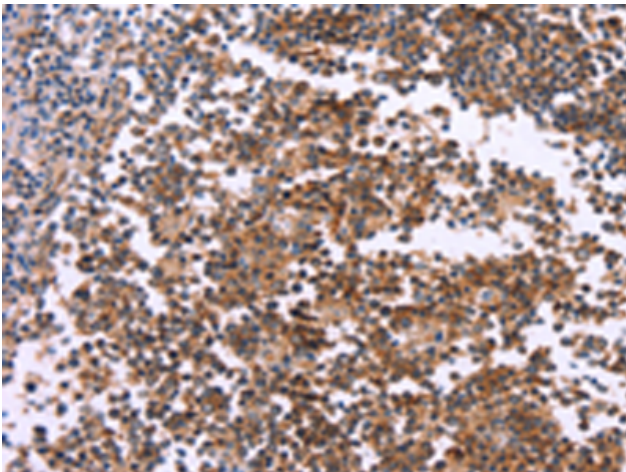
Storage & Shipping: Store at -20°C. Avoid repeated freezing and thawing



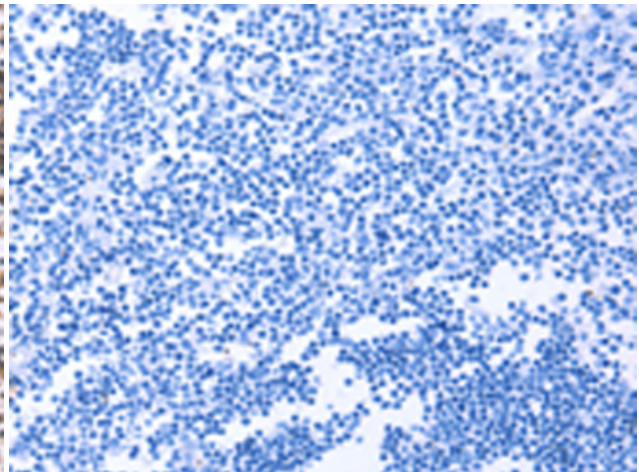
Immunohistochemistry analysis of paraffin embedded Human thyroid cancer tissue using 220079(MAPK11 Antibody) at a dilution of 1/15(Cytoplasm).



In comparison with the IHC on the left, the same paraffin-embedded Human thyroid cancer tissue is first treated with the synthetic peptide and then with 220079(Anti-MAPK11 Antibody) at dilution 1/15.



The image on the left is immunohistochemistry of paraffin-embedded Human tonsil tissue using 220079(Anti-MAPK11 Antibody) at a dilution of 1/15.



In comparison with the IHC on the left, the same paraffin-embedded Human tonsil tissue is first treated with synthetic peptide and then with D260919(Anti-MAPK11 Antibody) at dilution 1/15.