

**MAPKAP KINASE 3 RABBIT MAB**

**Cat.#:** N263428

**Product Name:** Anti-MAPKAP Kinase 3 Rabbit Monoclonal Antibody

**Synonyms:** MAPKAPK3; MAP kinase-activated protein kinase 3; MAPK-activated protein kinase 3; MAPKAP kinase 3; MAPKAP-K3; MAPKAPK-3; MK-3; Chromosome 3p kinase; 3pK

**UNIPROT ID:** Q16644

**Background:** Stress-activated serine/threonine-protein kinase involved in cytokines production, endocytosis, cell migration, chromatin remodeling and transcriptional regulation.

**Immunogen:** A synthetic peptide of human MK-3

**Applications:** WB,IP

**Recommended Dilutions:** WB: 1/500-1/1000 IP: 1/20

**Host Species:** Rabbit

**Clonality:** Rabbit Monoclonal

**Clone ID:** R08-4B6

**MW:** Calculated MW: 43 kDa; Observed MW: 43 kDa

**Isotype:** IgG

**Purification:** Affinity Purified

**Species Reactivity:** Human

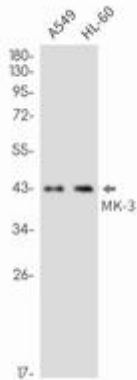
**Conjugation:** Unconjugated

**Modification:** Unmodified

**Constituents:** PBS (without Mg<sup>2+</sup> and Ca<sup>2+</sup>), pH 7.3 containing 50% glycerol, 0.5% BSA and 0.02% sodium azide

**Research Areas:** Signal Transduction

**Storage & Shipping:** Store at -20°C. Avoid repeated freezing and thawing



Western blot analysis of MK3 in A549, HL-60 lysates using MAPKAP Kinase 3 antibody.