

## MARCKSL1 RABBIT PAB

**Cat.#:** S219245

**Product Name:** Anti-MARCKSL1 Rabbit Polyclonal Antibody

**Synonyms:** F52; MLP; MRP; MLP1; MACMARCKS

**UNIPROT ID:** P49006 (Gene Accession - BC007904 )

**Background:** This gene encodes a member of the myristoylated alanine-rich C-kinase substrate (MARCKS) family. Members of this family play a role in cytoskeletal regulation, protein kinase C signaling and calmodulin signaling. The encoded protein affects the formation of adherens junction. Alternative splicing results in multiple transcript variants. Pseudogenes of this gene are located on the long arm of chromosomes 6 and 10.

**Immunogen:** Fusion protein of human MARCKSL1

**Applications:** ELISA, WB, IHC

**Recommended Dilutions:** IHC: 50-100;WB: 500-2000;ELISA: 5000-10000

**Host Species:** Rabbit

**Clonality:** Rabbit Polyclonal

**Isotype:** Immunogen-specific rabbit IgG

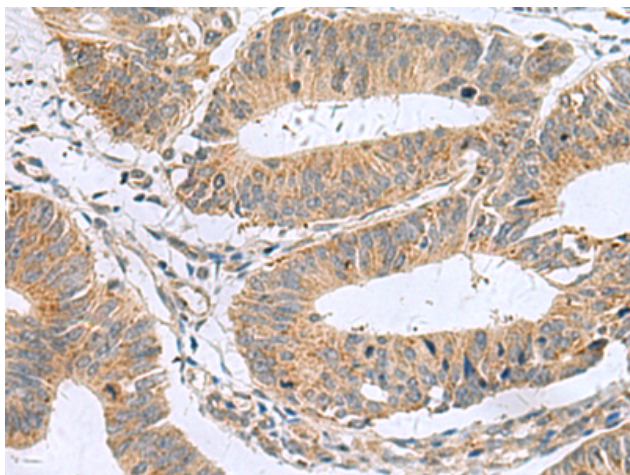
**Purification:** Antigen affinity purification

**Species Reactivity:** Human, Mouse, Rat

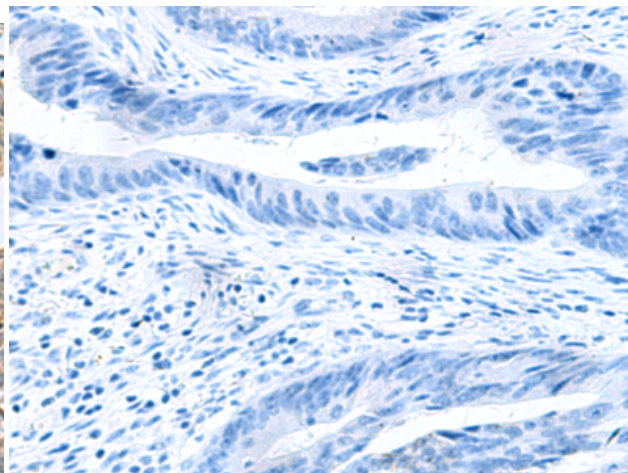
**Constituents:** PBS (without Mg<sup>2+</sup> and Ca<sup>2+</sup>), pH 7.4, 150 mM NaCl, 0.05% Sodium Azide and 40% glycerol

**Research Areas:** Signal Transduction

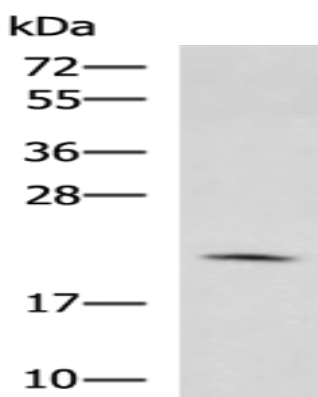
**Storage & Shipping:** Store at -20°C. Avoid repeated freezing and thawing



Immunohistochemistry analysis of paraffin embedded Human colorectal cancer tissue using 219245(MARCKSL1 Antibody) at a dilution of 1/50(Cytoplasm).



In comparison with the IHC on the left, the same paraffin-embedded Human colorectal cancer tissue is first treated with the fusion protein and then with 219245(Anti-MARCKSL1 Antibody) at dilution 1/50.



Gel: 12%SDS-PAGE, Lysate: 40  $\mu$ g;  
Lane: RAW264.7 cell lysate;  
Primary antibody: 219245(MARCKSL1 Antibody) at dilution 1/750;  
Secondary antibody: HRP-conjugated Goat anti rabbit IgG at 1/5000 dilution;  
Exposure time: 1 minute