

MASP1 RABBIT PAB

Cat.#: S216635

Product Name: Anti-MASP1 Rabbit Polyclonal Antibody

Synonyms: 3MC1; MAPI; MASP; RaRF; CRARF; MASP3; MAP44; PRSS5; CRARF1

UNIPROT ID: P48740 (Gene Accession - BC106945)

Background: This gene encodes a serine protease that functions as a component of the lectin pathway of complement activation. The complement pathway plays an essential role in the innate and adaptive immune response. The encoded protein is synthesized as a zymogen and is activated when it complexes with the pathogen recognition molecules of lectin pathway, the mannose-binding lectin and the ficolins. This protein is not directly involved in complement activation but may play a role as an amplifier of complement activation by cleaving complement C2 or by activating another complement serine protease, MASP-2. The encoded protein is also able to cleave fibrinogen and factor XIII and may be involved in coagulation. A splice variant of this gene which lacks the serine protease domain functions as an inhibitor of the complement pathway. Alternate splicing results in multiple transcript variants.

Immunogen: Fusion protein of human MASP1

Applications: ELISA, WB, IHC

Recommended Dilutions: IHC: 100-300;WB: 500-2000;ELISA: 5000-10000

Host Species: Rabbit

Clonality: Rabbit Polyclonal

Isotype: Immunogen-specific rabbit IgG

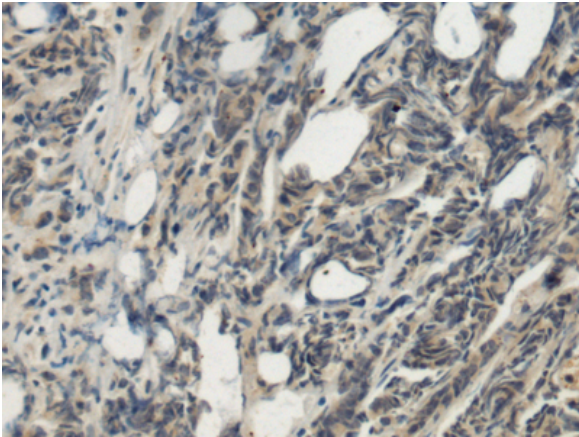
Purification: Antigen affinity purification

Species Reactivity: Human

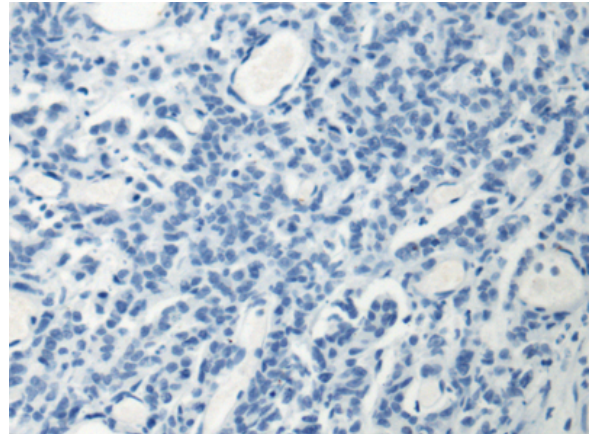
Constituents: PBS (without Mg²⁺ and Ca²⁺), pH 7.4, 150 mM NaCl, 0.05% Sodium Azide and 40% glycerol

Research Areas: Immunology

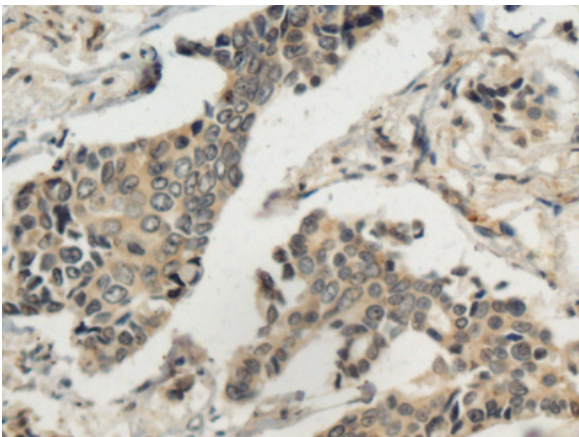
Storage & Shipping: Store at -20°C. Avoid repeated freezing and thawing



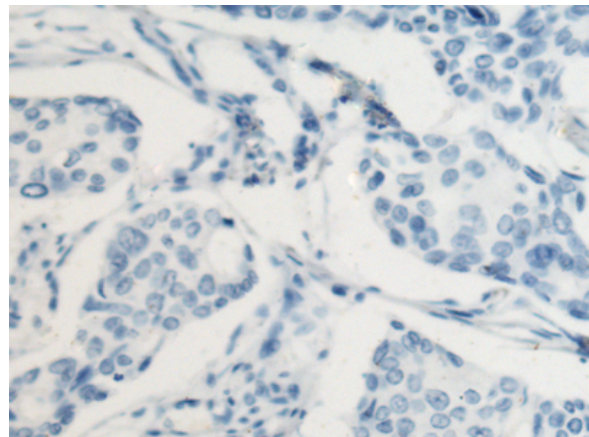
Immunohistochemistry analysis of paraffin embedded Human prostate cancer tissue using 216635(MASPI Antibody) at a dilution of 1/140 (Secreted).



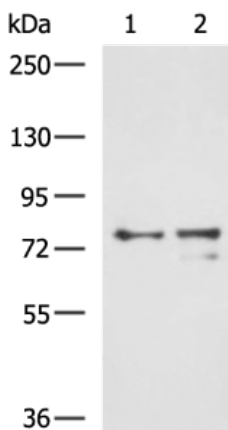
In comparison with the IHC on the left, the same paraffin-embedded Human prostate cancer tissue is first treated with the fusion protein and then with 216635(Anti-MASPI Antibody) at dilution 1/140.



The image on the left is immunohistochemistry of paraffin-embedded Human breast cancer tissue using 216635(Anti-MASPI Antibody) at a dilution of 1/140.



In comparison with the IHC on the left, the same paraffin-embedded Human breast cancer tissue is first treated with fusion protein and then with D220954(Anti-MASPI Antibody) at dilution 1/140.



Gel: 6%SDS-PAGE, Lysate: 40 µg;
Lane 1-2: Human heart tissue and Hela cell lysates;
Primary antibody: 216635(MASPI Antibody) at dilution 1/1000;
Secondary antibody: HRP-conjugated Goat anti rabbit IgG at 1/5000 dilution;
Exposure time: 2 minutes



Product Description

Pioneering GTPase and Oncogene Product Development since 2010
