

MAT1A RABBIT MAB

Cat.#: N262491

Product Name: Anti-MAT1A Rabbit Monoclonal Antibody

Synonyms: MAT; SAMS; MATA1; SAMSI; MAT1A

UNIPROT ID: Q00266

Background: This gene catalyzes a two-step reaction that involves the transfer of the adenosyl moiety of ATP to methionine to form S-adenosylmethionine and triphosphosphate, which is subsequently cleaved to PPI and Pi. S-adenosylmethionine is the source of methyl groups for most biological methylations. The encoded protein is found as a homotetramer (MAT I) or a homodimer (MAT III) whereas a third form, MAT II (gamma), is encoded by the MAT2A gene. Mutations in this gene are associated with methionine adenosyltransferase deficiency.

Immunogen: A synthetic peptide of human MAT1A

Applications: WB,IP

Recommended Dilutions: WB: 1/500-1/1000 IP: 1/20

Host Species: Rabbit

Clonality: Rabbit Monoclonal

Clone ID: R09-9C8

MW: Calculated MW: 44 kDa; Observed MW: 44 kDa

Isotype: IgG

Purification: Affinity Purified

Species Reactivity: Human,Mouse,Rat

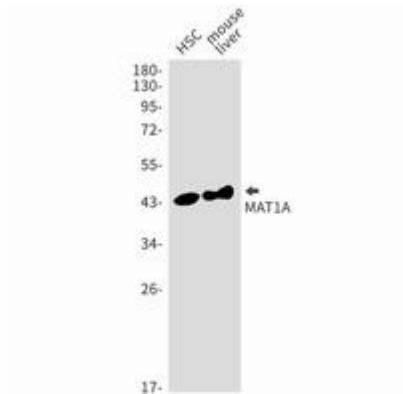
Conjugation: Unconjugated

Modification: Unmodified

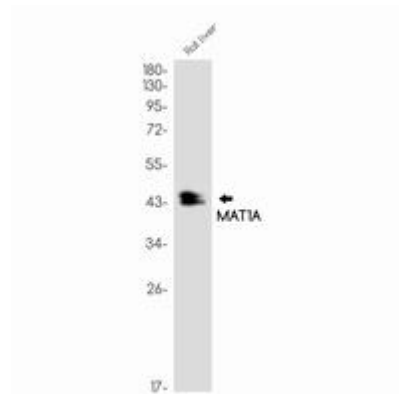
Constituents: PBS (without Mg²⁺ and Ca²⁺), pH 7.3 containing 50% glycerol, 0.5% BSA and 0.02% sodium azide

Research Areas: Signal Transduction

Storage & Shipping: Store at -20°C. Avoid repeated freezing and thawing



Western blot analysis of MAT1A in HSC, mouse liver lysates using MAT1A antibody.



Western blot analysis of MAT1A in rat liver lysates using MAT1A antibody.