

MATRIN 3 RABBIT MAB

Cat.#: N261553

Product Name: Anti-Matrin 3 Rabbit Monoclonal Antibody

Synonyms: KIAA0723; Matr3; Matrin3; MPD2; VCPDM

UNIPROT ID: P43243

Background: May play a role in transcription or may interact with other nuclear matrix proteins to form the internal fibrogranular network. In association with the SFPQ-NONO heteromer may play a role in nuclear retention of defective RNAs.

Immunogen: A synthetic peptide of human Matrin 3

Applications: WB,IHC-F,IHC-P,ICC/IF

Recommended Dilutions: WB: 1/500-1/1000 IHC: 1/50-1/100 IF: 1/50-1/200

Host Species: Rabbit

Clonality: Rabbit Monoclonal

Clone ID: R09-5E3

MW: Calculated MW: 95 kDa; Observed MW: 125 kDa

Isotype: IgG

Purification: Affinity Purified

Species Reactivity: Human

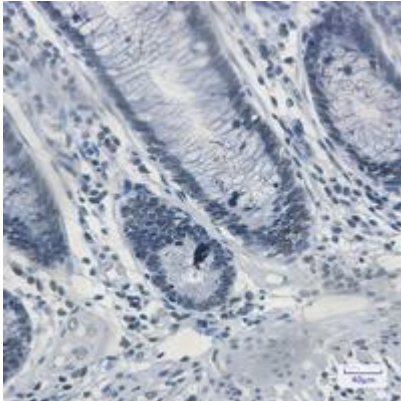
Conjugation: Unconjugated

Modification: Unmodified

Constituents: PBS (without Mg²⁺ and Ca²⁺), pH 7.3 containing 50% glycerol, 0.5% BSA and 0.02% sodium azide

Research Areas: Epigenetics and Nuclear Signaling

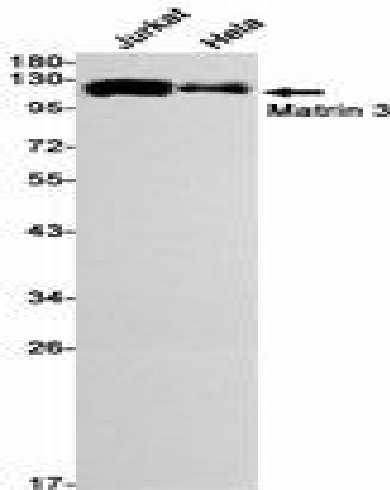
Storage & Shipping: Store at -20°C. Avoid repeated freezing and thawing



Immunohistochemistry analysis of paraffin-embedded Human colon cancer tissue using Matrin 3 antibody. High-pressure and temperature Sodium Citrate pH 6.0 was used for antigen retrieval.



Immunocytochemistry analysis of Matrin 3 (green) in HL-60 using Matrin 3 antibody, and DAPI (blue).



Western blot analysis of Matrin 3 in Jurkat, Hela lysates using Matrin 3 antibody.