

MCAM RABBIT PAB

Cat.#: S213885

Product Name: Anti-MCAM Rabbit Polyclonal Antibody

Synonyms: CD146; MUC18; HEMCAM; METCAM; MelCAM

UNIPROT ID: P43121 (Gene Accession - NP_006491)

Background: Plays a role in cell adhesion, and in cohesion of the endothelial monolayer at intercellular junctions in vascular tissue. Its expression may allow melanoma cells to interact with cellular elements of the vascular system, thereby enhancing hematogeneous tumor spread. Could be an adhesion molecule active in neural crest cells during embryonic development. Acts as surface receptor that triggers tyrosine phosphorylation of FYN and PTK2/FAK1, and a transient increase in the intracellular calcium concentration.

Immunogen: Synthetic peptide of human MCAM

Applications: ELISA, WB, IHC

Recommended Dilutions: IHC: 40-200;WB: 500-2000;ELISA: 5000-10000

Host Species: Rabbit

Clonality: Rabbit Polyclonal

Isotype: Immunogen-specific rabbit IgG

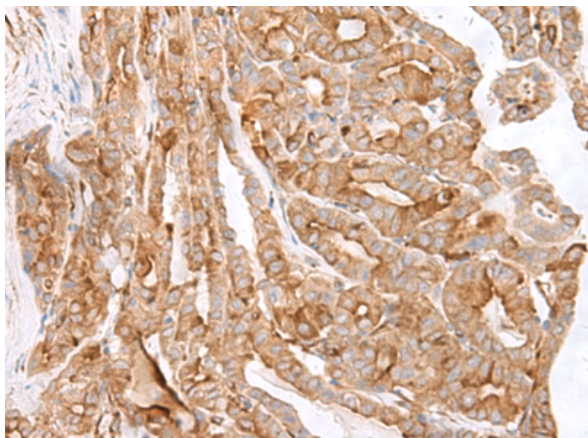
Purification: Antigen affinity purification

Species Reactivity: Human

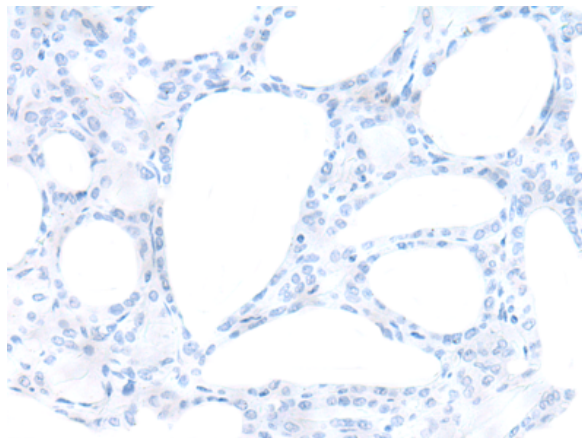
Constituents: PBS (without Mg²⁺ and Ca²⁺), pH 7.4, 150 mM NaCl, 0.05% Sodium Azide and 40% glycerol

Research Areas: Signal Transduction, Cardiovascular, Immunology, Stem Cells

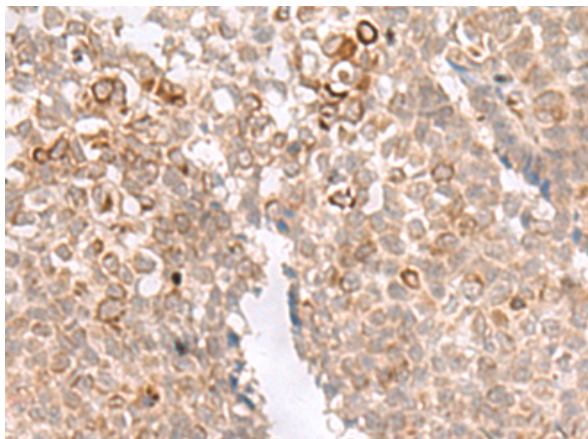
Storage & Shipping: Store at -20°C. Avoid repeated freezing and thawing



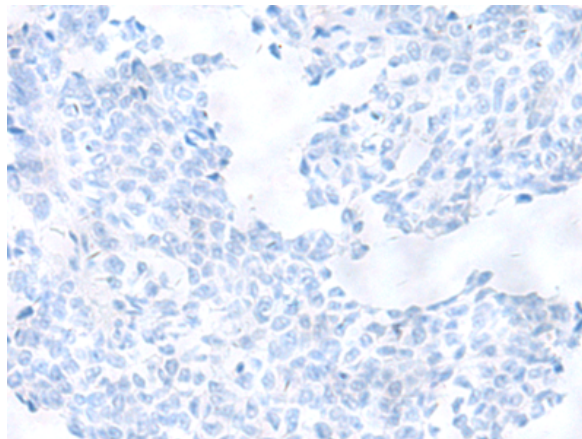
Immunohistochemistry analysis of paraffin embedded Human thyroid cancer tissue using 213885(MCAM Antibody) at a dilution of 1/40(Cell membrane).



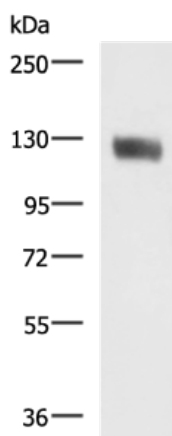
In comparison with the IHC on the left, the same paraffin-embedded Human thyroid cancer tissue is first treated with the synthetic peptide and then with 213885(Anti-MCAM Antibody) at dilution 1/40.



The image on the left is immunohistochemistry of paraffin-embedded Human ovarian cancer tissue using 213885(Anti-MCAM Antibody) at a dilution of 1/40.



In comparison with the IHC on the left, the same paraffin-embedded Human ovarian cancer tissue is first treated with synthetic peptide and then with D161008(Anti-MCAM Antibody) at dilution 1/40.



Gel: 6%SDS-PAGE, Lysate: 40 µg;
 Lane: Human leiomyosarcoma tissue lysate;
 Primary antibody: 213885(MCAM Antibody) at dilution 1/400;
 Secondary antibody: HRP-conjugated Goat anti rabbit IgG at 1/5000 dilution;
 Exposure time: 5 seconds



Product Description

Pioneering GTPase and Oncogene Product Development since 2010
