

## MCHR2 RABBIT PAB

**Cat.#:** S215895

**Product Name:** Anti-MCHR2 Rabbit Polyclonal Antibody

**Synonyms:** SLT; MCH2; MCH2R; GPR145; GPRv17; MCH-2R; MCH-R2; MCHR-2

**UNIPROT ID:** Q969V1 (Gene Accession - NP\_115892 )

**Background:** Receptor for melanin-concentrating hormone, coupled to G proteins that activate phosphoinositide hydrolysis.

**Immunogen:** Synthetic peptide of human MCHR2

**Applications:** ELISA, IHC

**Recommended Dilutions:** IHC: 20-100; ELISA: 5000-10000

**Host Species:** Rabbit

**Clonality:** Rabbit Polyclonal

**Isotype:** Immunogen-specific rabbit IgG

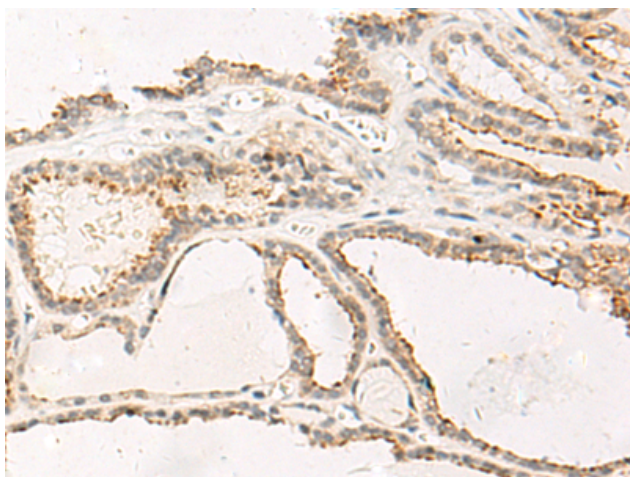
**Purification:** Antigen affinity purification

**Species Reactivity:** Human

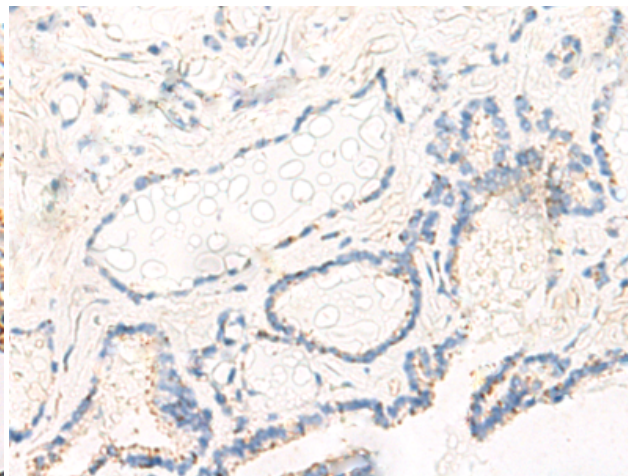
**Constituents:** PBS (without Mg<sup>2+</sup> and Ca<sup>2+</sup>), pH 7.4, 150 mM NaCl, 0.05% Sodium Azide and 40% glycerol

**Research Areas:** Signal Transduction, Neuroscience

**Storage & Shipping:** Store at -20°C. Avoid repeated freezing and thawing



Immunohistochemistry analysis of paraffin embedded Human thyroid cancer tissue using 215895(MCHR2 Antibody) at a dilution of 1/20(Cell membrane).



In comparison with the IHC on the left, the same paraffin-embedded Human thyroid cancer tissue is first treated with the synthetic peptide and then with 215895(Anti-MCHR2 Antibody) at dilution 1/20.