

MCL1 RABBIT PAB

Cat.#: N225455

Product Name: Anti-MCL1 Rabbit pAb

Synonyms: MCL1; BCL2L3; Induced myeloid leukemia cell differentiation protein Mcl-1; Bcl-2-like protein 3; Bcl2-L-3; Bcl-2-related protein EAT/mcl1; mcl1/EAT

UNIPROT ID: Q07820

Background: MCL1 a myeloid cell leukemia protein of the Bcl-2 family of proteins. Two alternatively spliced transcripts encoding distinct isoforms have been identified. The longer gene product (isoform 1) enhances cell survival by inhibiting apoptosis while the alternatively spliced shorter gene product (isoform 2) promotes apoptosis and is death-inducing.

Immunogen: The antiserum was produced against synthesized peptide derived from human MCL1. AA range:91-140

Applications: WB,IHC-P,ELISA

Recommended Dilutions: WB: 1/500-1/1000 IHC: 1/50-1/100 ELISA: 1/10000

Host Species: Rabbit

Clonality: Rabbit Polyclonal

Clone ID: -

MW: Calculated MW: 37 kDa; Observed MW: 37 kDa

Isotype: IgG

Purification: Affinity Chromatography

Species Reactivity: Human,Mouse,Rat

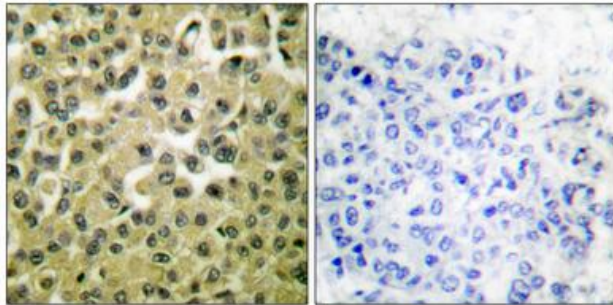
Conjugation: Unconjugated

Modification: Unmodified

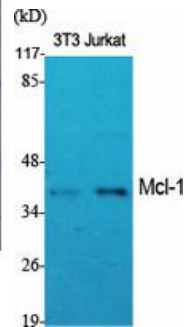
Constituents: PBS (without Mg²⁺ and Ca²⁺), pH 7.3 containing 50% glycerol, 0.5% BSA and 0.02% sodium azide

Research Areas: Cell Biology

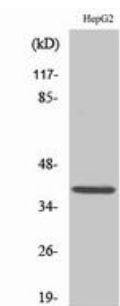
Storage & Shipping: Store at -20°C. Avoid repeated freezing and thawing



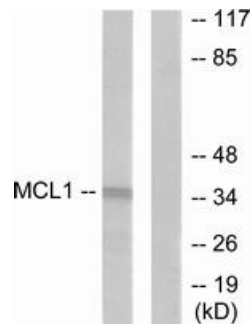
Immunohistochemistry analysis of paraffin-embedded Human breast carcinoma tissue using MCL1 antibody. High-pressure and temperature Sodium Citrate pH 6.0 was used for antigen retrieval. Sample with blocking peptide on the right.



Western blot analysis of MCL1 in various lysates using MCL1 antibody.



Western blot analysis of MCL1 in Jurkat lysates using Mcl1 antibody.



Western blot analysis of MCL1 in HUVEC lysates using MCL1 antibody. The lane on the right is blocked with the synthesized peptide.