

## MCM3 RABBIT MAB

**Cat.#:** N261546

**Product Name:** Anti-MCM3 Rabbit Monoclonal Antibody

**Synonyms:** MCM3; HCC5; P1-MCM3; P1.h; RLFB

**UNIPROT ID:** P25205

**Background:** Acts as component of the MCM2-7 complex (MCM complex) which is the putative replicative helicase essential for 'once per cell cycle' DNA replication initiation and elongation in eukaryotic cells.

**Immunogen:** A synthetic peptide of human MCM3

**Applications:** WB,IHC-F,IHC-P,ICC/IF

**Recommended Dilutions:** WB: 1/500-1/1000 IHC: 1/50-1/100 IF: 1/50-1/200

**Host Species:** Rabbit

**Clonality:** Rabbit Monoclonal

**Clone ID:** R04-6B9

**MW:** Calculated MW: 91 kDa; Observed MW: 100 kDa

**Isotype:** IgG

**Purification:** Affinity Purified

**Species Reactivity:** Human,Rat

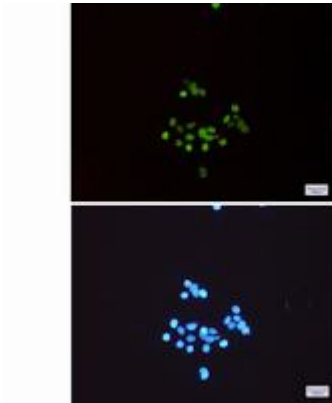
**Conjugation:** Unconjugated

**Modification:** Unmodified

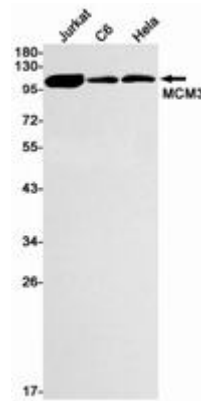
**Constituents:** PBS (without Mg<sup>2+</sup> and Ca<sup>2+</sup>), pH 7.3 containing 50% glycerol, 0.5% BSA and 0.02% sodium azide

**Research Areas:** Epigenetics and Nuclear Signaling

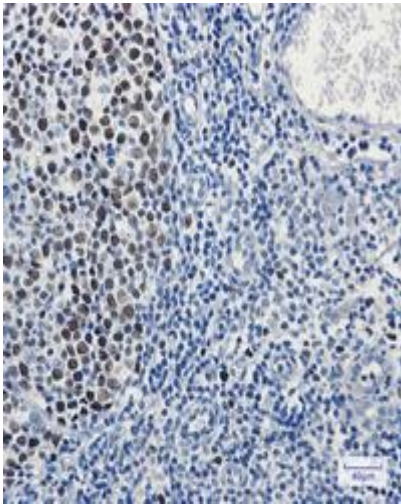
**Storage & Shipping:** Store at -20°C. Avoid repeated freezing and thawing



Immunocytochemistry analysis of MCM3 (green) in HeLa using MCM3 antibody, and DAPI (blue)



Western blot analysis of MCM3 in Jurkat, C6, HeLa lysates using MCM3 antibody.



Immunohistochemistry analysis of paraffin-embedded Human tonsil using MCM3 antibody. High-pressure and temperature Sodium Citrate pH 6.0 was used for antigen retrieval.