

MCM4 RABBIT MAB

Cat.#: N263418

Product Name: Anti-MCM4 Rabbit Monoclonal Antibody

Synonyms: MCM4; CDC21; DNA replication licensing factor MCM4; CDC21 homolog; PI-CDC21

UNIPROT ID: P33991

Background: Acts as component of the MCM2-7 complex (MCM complex) which is the putative replicative helicase essential for 'once per cell cycle' DNA replication initiation and elongation in eukaryotic cells.

Immunogen: A synthetic peptide of human MCM4

Applications: WB,IP

Recommended Dilutions: WB: 1/500-1/1000 IP: 1/20

Host Species: Rabbit

Clonality: Rabbit Monoclonal

Clone ID: R02-8F8

MW: Calculated MW: 97 kDa; Observed MW: 97 kDa

Isotype: IgG

Purification: Affinity Purified

Species Reactivity: Human

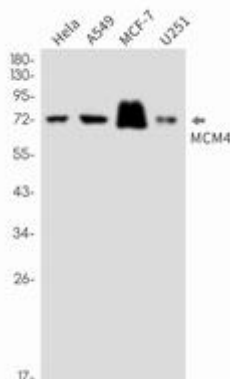
Conjugation: Unconjugated

Modification: Unmodified

Constituents: PBS (without Mg²⁺ and Ca²⁺), pH 7.3 containing 50% glycerol, 0.5% BSA and 0.02% sodium azide

Research Areas: Epigenetics and Nuclear Signaling

Storage & Shipping: Store at -20°C. Avoid repeated freezing and thawing



Western blot analysis of MCM4 in HeLa, A549, MCF-7, U251 lysates using MCM4 antibody.



Product Description

Pioneering GTPase and Oncogene Product Development since 2010
