

## MCM5 RABBIT MAB

**Cat.#:** N261577

**Product Name:** Anti-MCM5 Rabbit Monoclonal Antibody

**Synonyms:** CDC46; MCM5; MGC5315; P1 CDC46

**UNIPROT ID:** P33992

**Background:** MCM5 Belongs to the MCM family.

**Immunogen:** A synthetic peptide of human MCM5

**Applications:** WB,IHC-F,IHC-P,ICC/IF,IP

**Recommended Dilutions:** WB: 1/500-1/1000 IHC: 1/50-1/100 IF: 1/50-1/200 IP: 1/20

**Host Species:** Rabbit

**Clonality:** Rabbit Monoclonal

**Clone ID:** R05-5E5

**MW:** Calculated MW: 82 kDa; Observed MW: 82 kDa

**Isotype:** IgG

**Purification:** Affinity Purified

**Species Reactivity:** Human,Rat

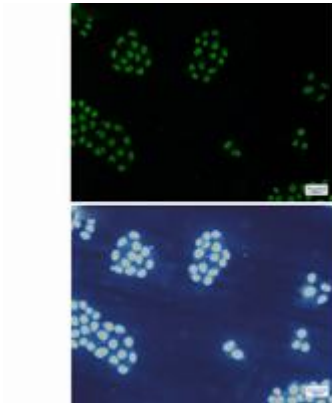
**Conjugation:** Unconjugated

**Modification:** Unmodified

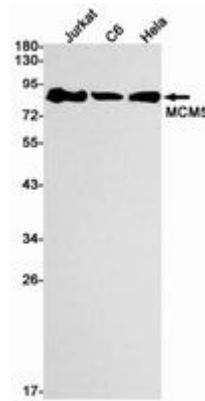
**Constituents:** PBS (without Mg<sup>2+</sup> and Ca<sup>2+</sup>), pH 7.3 containing 50% glycerol, 0.5% BSA and 0.02% sodium azide

**Research Areas:** Epigenetics and Nuclear Signaling

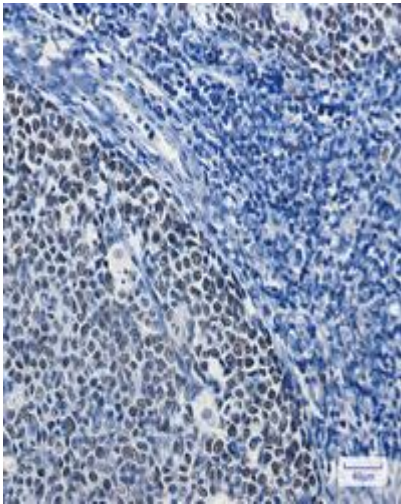
**Storage & Shipping:** Store at -20°C. Avoid repeated freezing and thawing



Immunocytochemistry analysis of MCM5 (green) in HeLa using MCM5 antibody, and DAPI (blue)



Western blot analysis of MCM5 in Jurkat, C6, HeLa lysates using MCM5 antibody.



Immunohistochemistry analysis of paraffin-embedded Human tonsil using MCM5 antibody. High-pressure and temperature Sodium Citrate pH 6.0 was used for antigen retrieval.