

MCM5 RABBIT PAB

Cat.#: N225921

Product Name: Anti-MCM5 Rabbit pAb

Synonyms: CDC46; MCM5; MGC5315; P1 CDC46

UNIPROT ID: P33992

Background: MCM5 Belongs to the MCM family.

Immunogen: A synthesized peptide derived from human MCM5

Applications: WB,IHC-P,ICC/IF,IP,FC

Recommended Dilutions: WB: 1/500-1/1000 IHC: 1/50-1/100 IF: 1/50-1/200 IP: 1/20 FC: 1/50-1/100

Host Species: Rabbit

Clonality: Rabbit Polyclonal

Clone ID: -

MW: Calculated MW: 82 kDa; Observed MW: 82 kDa

Isotype: IgG

Purification: Affinity Chromatography

Species Reactivity: Human,Mouse

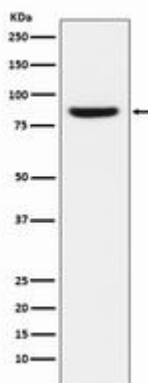
Conjugation: Unconjugated

Modification: Unmodified

Constituents: PBS (without Mg²⁺ and Ca²⁺), pH 7.3 containing 50% glycerol, 0.5% BSA and 0.02% sodium azide

Research Areas: Epigenetics and Nuclear Signaling

Storage & Shipping: Store at -20°C. Avoid repeated freezing and thawing



Western blot analysis of MCM5 in MCF-7 lysates using MCM5 antibody.