

## MCM6 RABBIT MAB

**Cat.#:** N261547

**Product Name:** Anti-MCM6 Rabbit Monoclonal Antibody

**Synonyms:** minichromosome maintenance complex component 6; Mis5; P105MCM; MCG40308

**UNIPROT ID:** Q14566

**Background:** Acts as component of the MCM2-7 complex (MCM complex) which is the putative replicative helicase essential for 'once per cell cycle' DNA replication initiation and elongation in eukaryotic cells.

**Immunogen:** Recombinant protein of human MCM6

**Applications:** WB,IHC-F,IHC-P,ICC/IF,IP

**Recommended Dilutions:** WB: 1/500-1/1000 IHC: 1/50-1/100 IF: 1/50-1/200 IP: 1/20

**Host Species:** Rabbit

**Clonality:** Rabbit Monoclonal

**Clone ID:** R02-212

**MW:** Calculated MW: 93 kDa; Observed MW: 93 kDa

**Isotype:** IgG

**Purification:** Affinity Purified

**Species Reactivity:** Human

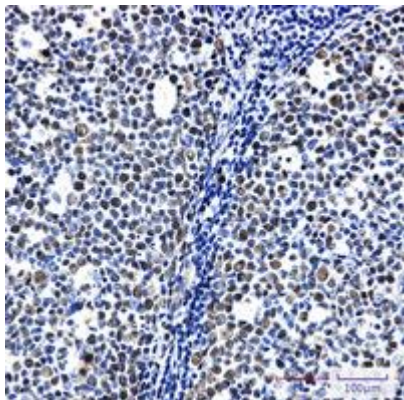
**Conjugation:** Unconjugated

**Modification:** Unmodified

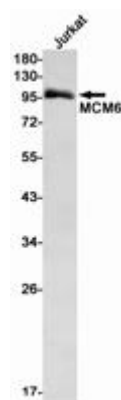
**Constituents:** PBS (without Mg<sup>2+</sup> and Ca<sup>2+</sup>), pH 7.3 containing 50% glycerol, 0.5% BSA and 0.02% sodium azide

**Research Areas:** Epigenetics and Nuclear Signaling

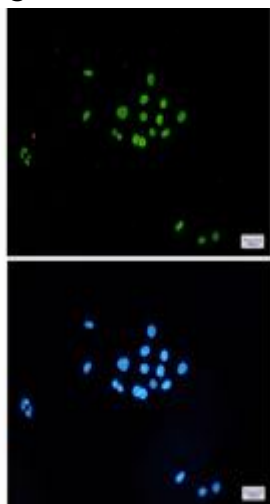
**Storage & Shipping:** Store at -20°C. Avoid repeated freezing and thawing



Immunohistochemistry analysis of paraffin-embedded Human tonsil using MCM6 antibody. High-pressure and temperature Sodium Citrate pH 6.0 was used for antigen retrieval.



Western blot analysis of MCM6 in Jurkat lysates using MCM6 antibody.



Immunocytochemistry analysis of MCM6 (green) in Hela using MCM6 antibody, and DAPI (blue)