

MCMBP RABBIT PAB

Cat.#: S219911

Product Name: Anti-MCMBP Rabbit Polyclonal Antibody

Synonyms: MCM-BP; C10orf119

UNIPROT ID: Q9BTE3 (Gene Accession - NP_079110)

Background: This gene encodes a protein which is a component of the hexameric minichromosome maintenance (MCM) complex which regulates initiation and elongation of DNA. Multiple transcript variants encoding different isoforms have been found for this gene.

Immunogen: Synthetic peptide of human MCMBP

Applications: ELISA, WB, IHC

Recommended Dilutions: IHC: 30-150;WB: 500-2000;ELISA: 5000-10000

Host Species: Rabbit

Clonality: Rabbit Polyclonal

Isotype: Immunogen-specific rabbit IgG

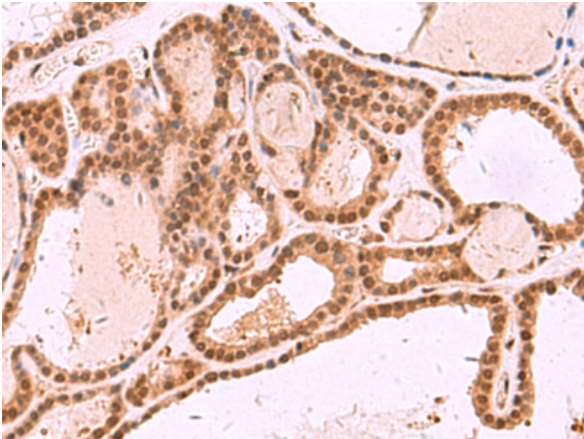
Purification: Antigen affinity purification

Species Reactivity: Human, Rat

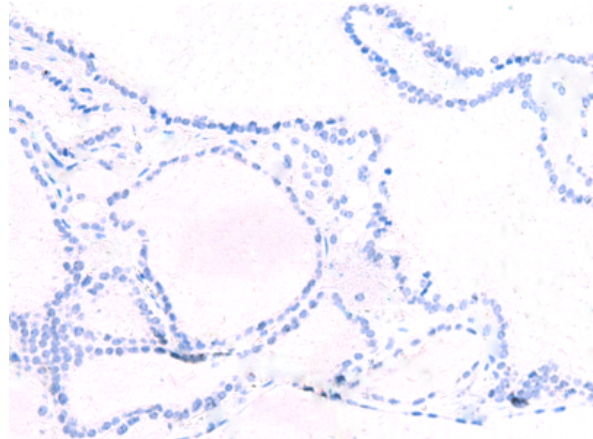
Constituents: PBS (without Mg²⁺ and Ca²⁺), pH 7.4, 150 mM NaCl, 0.05% Sodium Azide and 40% glycerol

Research Areas: Epigenetics and Nuclear Signaling, Cancer

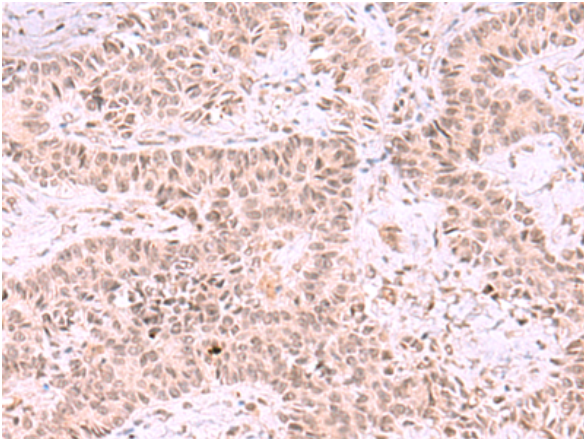
Storage & Shipping: Store at -20°C. Avoid repeated freezing and thawing



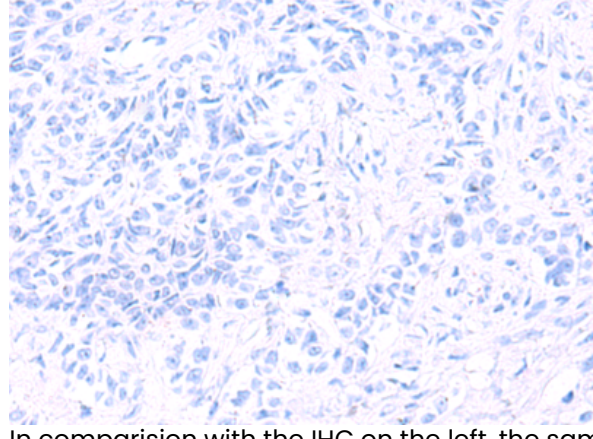
Immunohistochemistry analysis of paraffin embedded Human thyroid cancer tissue using 219911(MCMBP Antibody) at a dilution of 1/35(Cytoplasm and Nucleus).



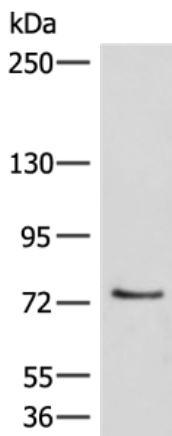
In comparison with the IHC on the left, the same paraffin-embedded Human thyroid cancer tissue is first treated with the synthetic peptide and then with 219911(Anti-MCMBP Antibody) at dilution 1/35.



The image on the left is immunohistochemistry of paraffin-embedded Human ovarian cancer tissue using 219911(Anti-MCMBP Antibody) at a dilution of 1/35.



In comparison with the IHC on the left, the same paraffin-embedded Human ovarian cancer tissue is first treated with synthetic peptide and then with D260598(Anti-MCMBP Antibody) at dilution 1/35.



Gel: 6%SDS-PAGE, Lysate: 40 µg;
Lane: 293T cell lysate;
Primary antibody: 219911(MCMBP Antibody) at dilution 1/800;
Secondary antibody: HRP-conjugated Goat anti rabbit IgG at 1/5000 dilution;
Exposure time: 1 minute



Product Description

Pioneering GTPase and Oncogene Product Development since 2010
