

## MCPH1 RABBIT PAB

**Cat.#:** S218373

**Product Name:** Anti-MCPH1 Rabbit Polyclonal Antibody

**Synonyms:** MCT; BRIT1

**UNIPROT ID:** Q8NEM0 (Gene Accession - BC030702 )

**Background:** This gene encodes a DNA damage response protein. The encoded protein may play a role in G2/M checkpoint arrest via maintenance of inhibitory phosphorylation of cyclin-dependent kinase 1. Mutations in this gene have been associated with primary autosomal recessive microcephaly 1 and premature chromosome condensation syndrome. Alternatively spliced transcript variants have been described.

**Immunogen:** Fusion protein of human MCPH1

**Applications:** ELISA, IHC

**Recommended Dilutions:** IHC: 50–300; ELISA: 5000–10000

**Host Species:** Rabbit

**Clonality:** Rabbit Polyclonal

**Isotype:** Immunogen-specific rabbit IgG

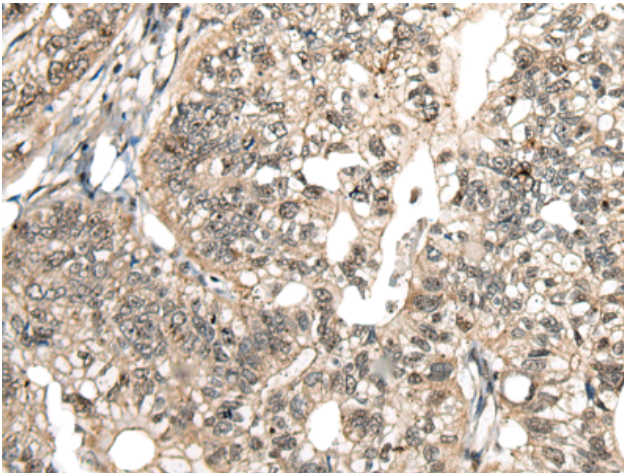
**Purification:** Antigen affinity purification

**Species Reactivity:** Human

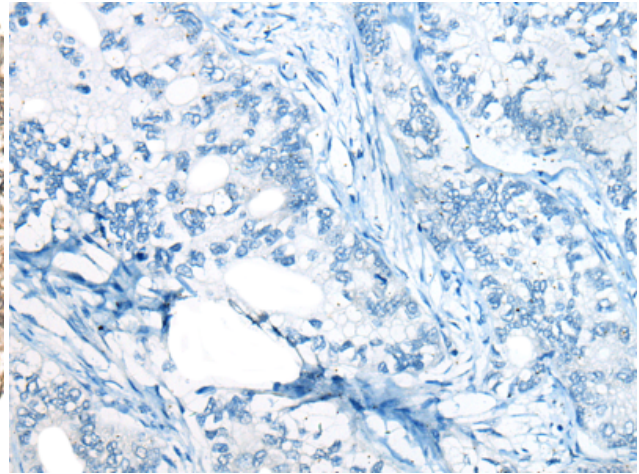
**Constituents:** PBS (without Mg<sup>2+</sup> and Ca<sup>2+</sup>), pH 7.4, 150 mM NaCl, 0.05% Sodium Azide and 40% glycerol

**Research Areas:** Epigenetics and Nuclear Signaling

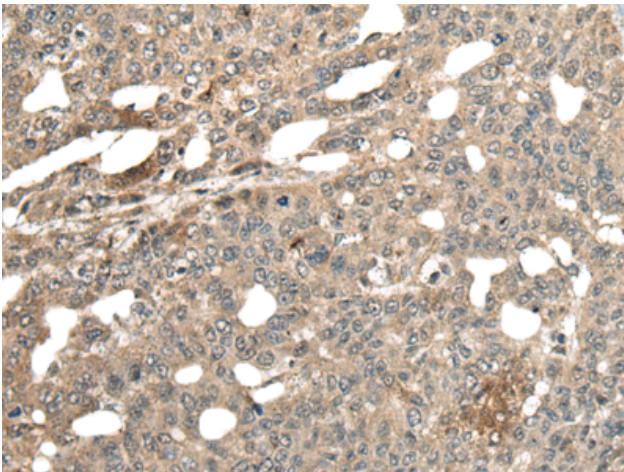
**Storage & Shipping:** Store at -20°C. Avoid repeated freezing and thawing



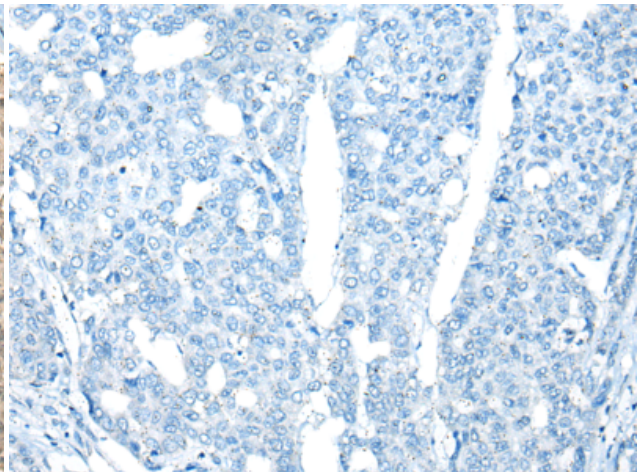
Immunohistochemistry analysis of paraffin embedded Human gastric cancer tissue using 218373(MCPH1 Antibody) at a dilution of 1/110(Nucleus and Cytoplasm).



In comparison with the IHC on the left, the same paraffin-embedded Human gastric cancer tissue is first treated with the fusion protein and then with 218373(Anti-MCPH1 Antibody) at dilution 1/110.



The image on the left is immunohistochemistry of paraffin-embedded Human liver cancer tissue using 218373(Anti-MCPH1 Antibody) at a dilution of 1/110.



In comparison with the IHC on the left, the same paraffin-embedded Human liver cancer tissue is first treated with fusion protein and then with D224277(Anti-MCPH1 Antibody) at dilution 1/110.