

MDB3 RABBIT PAB

Cat.#: N226051

Product Name: Anti-MDB3 Rabbit pAb

Synonyms: MBD3; Methyl-CpG-binding domain protein 3; Methyl-CpG-binding protein MBD3

UNIPROT ID: O95983

Background: Does not bind DNA by itself. Recruits histone deacetylases and DNA methyltransferases. Acts as transcriptional repressor and plays a role in gene silencing.

Immunogen: A synthetic peptide of human MBD3

Applications: WB, ICC/IF, FC, IP

Recommended Dilutions: WB: 1/500-1/1000 IF: 1/50-1/200 IP: 1/20 FC: 1/50-1/100

Host Species: Rabbit

Clonality: Rabbit Polyclonal

Clone ID: -

MW: Calculated MW: 33 kDa; Observed MW: 33 kDa

Isotype: IgG

Purification: Affinity Purified

Species Reactivity: Human, Mouse, Rat

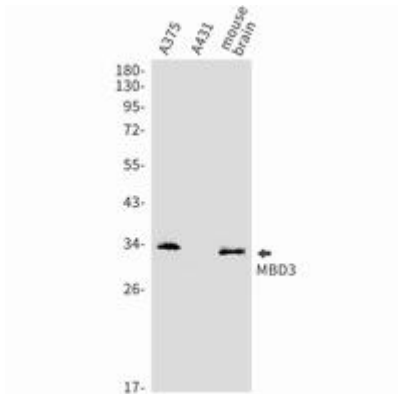
Conjugation: Unconjugated

Modification: Unmodified

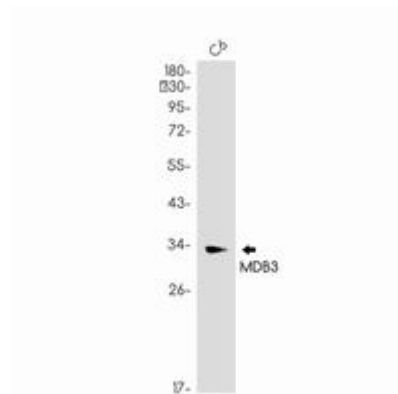
Constituents: PBS (without Mg²⁺ and Ca²⁺), pH 7.3 containing 50% glycerol, 0.5% BSA and 0.02% sodium azide

Research Areas: Epigenetics and Nuclear Signaling

Storage & Shipping: Store at -20°C. Avoid repeated freezing and thawing



Western blot analysis of MDB3 in A375, A431, mouse brain lysates using MDB3 antibody.



Western blot analysis of MDB3 in C6 lysates using MDB3 antibody.