

MDM2 RABBIT PAB

Cat.#: N225338

Product Name: Anti-MDM2 Rabbit pAb

Synonyms: Double minute 2 protein; Hdm2; Oncoprotein Mdm2

UNIPROT ID: Q00987

Background: E3 ubiquitin-protein ligase that mediates ubiquitination of p53/TP53, leading to its degradation by the proteasome.

Immunogen: Synthetic peptide of human MDM2

Applications: WB,IHC-P,ICC/IF

Recommended Dilutions: WB: 1/500-1/1000 IHC: 1/50-1/100 ICC: 1/100-1/200

Host Species: Rabbit

Clonality: Rabbit Polyclonal

Clone ID: -

MW: Calculated MW: 55 kDa; Observed MW: 90 kDa

Isotype: IgG

Purification: Affinity Purified

Species Reactivity: Human,Rat

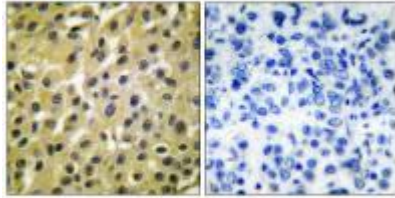
Conjugation: Unconjugated

Modification: Unmodified

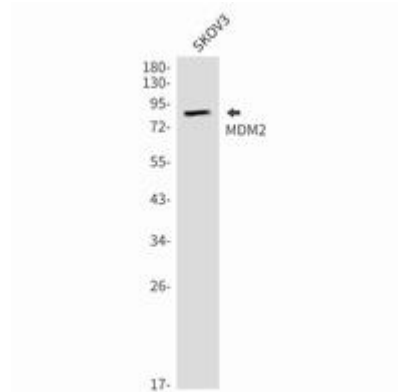
Constituents: PBS (without Mg²⁺ and Ca²⁺), pH 7.3 containing 50% glycerol, 0.5% BSA and 0.02% sodium azide

Research Areas: Neuroscience

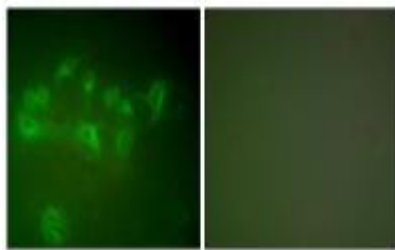
Storage & Shipping: Store at -20°C. Avoid repeated freezing and thawing



Immunohistochemistry analysis of paraffin-embedded Human breast carcinoma tissue using MDM2 antibody. High-pressure and temperature Sodium Citrate pH 6.0 was used for antigen retrieval. Sample with blocking peptide on the right.



Western blot analysis of MDM2 in SKOV-3 lysates using MDM2 antibody.



Immunofluorescence analysis of MDM2 in A549 cells using MDM2 antibody (green).