

MECKELIN RABBIT MAB

Cat.#: N263420

Product Name: Anti-Meckelin Rabbit Monoclonal Antibody

Synonyms: MKS3; JBTS6; NPHP11; TNEM67; MECKELIN

UNIPROT ID: Q5HYA8

Background: Required for ciliary structure and function.

Immunogen: A synthetic peptide of human Meckelin

Applications: WB, ICC/IF

Recommended Dilutions: WB: 1/500-1/1000 IF: 1/50-1/200

Host Species: Rabbit

Clonality: Rabbit Monoclonal

Clone ID: R07-2A4

MW: Calculated MW: 112 kDa; Observed MW: 112 kDa

Isotype: IgG

Purification: Affinity Purified

Species Reactivity: Human

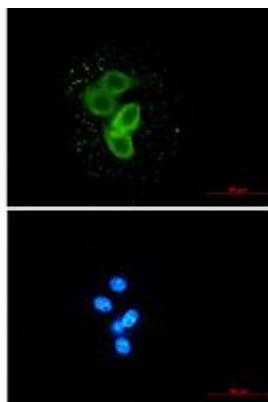
Conjugation: Unconjugated

Modification: Unmodified

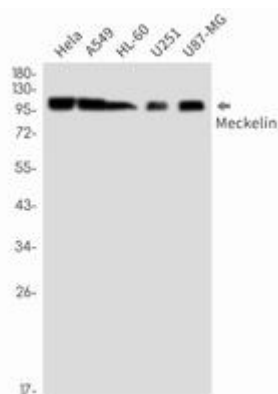
Constituents: PBS (without Mg²⁺ and Ca²⁺), pH 7.3 containing 50% glycerol, 0.5% BSA and 0.02% sodium azide

Research Areas: Tags & Cell Markers

Storage & Shipping: Store at -20°C. Avoid repeated freezing and thawing



Immunocytochemistry analysis of Meckelin (green) in MCF-7 using Meckelin antibody, and DAPI (blue)



Western blot analysis of Meckelin in HeLa, A549, HL-60, U251, U87-MG lysates using Meckelin antibody.



Product Description

Pioneering GTPase and Oncogene Product Development since 2010
