

## MED16 RABBIT PAB

**Cat.#:** S211640

**Product Name:** Anti-MED16 Rabbit Polyclonal Antibody

**Synonyms:** DRIP92; THRAP5; TRAP95

**UNIPROT ID:** Q9Y2X0 (Gene Accession - BC004554 )

**Background:** Enables thyroid hormone receptor binding activity and transcription coactivator activity. Involved in positive regulation of transcription initiation from RNA polymerase II promoter. Located in membrane. Part of mediator complex. [provided by Alliance of Genome Resources, Apr 2022]

**Immunogen:** Fusion protein of human MED16

**Applications:** ELISA, IHC

**Recommended Dilutions:** IHC: 100-300; ELISA: 5000-10000

**Host Species:** Rabbit

**Clonality:** Rabbit Polyclonal

**Isotype:** Immunogen-specific rabbit IgG

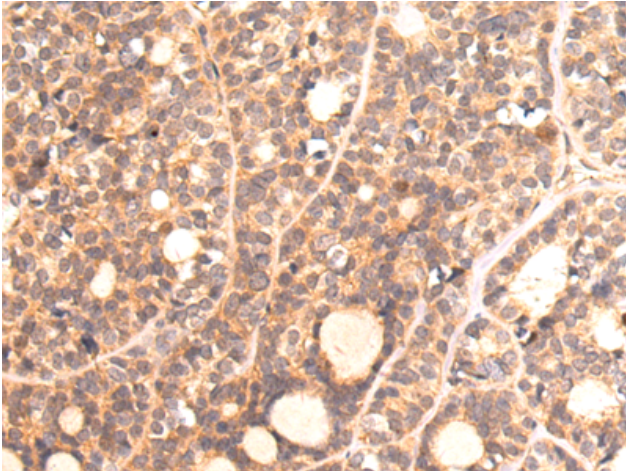
**Purification:** Antigen affinity purification

**Species Reactivity:** Human, Mouse

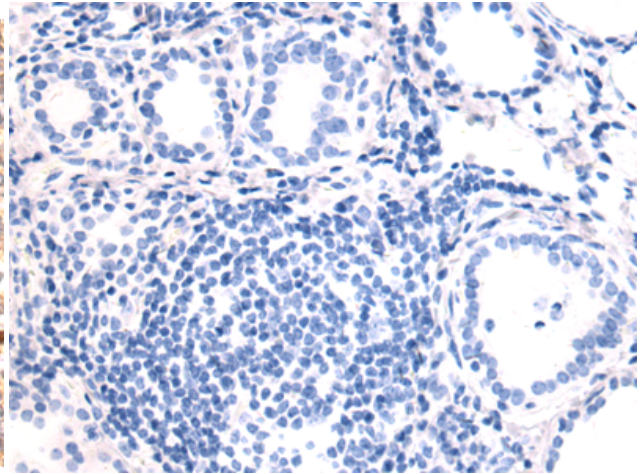
**Constituents:** PBS (without Mg<sup>2+</sup> and Ca<sup>2+</sup>), pH 7.4, 150 mM NaCl, 0.05% Sodium Azide and 40% glycerol

**Research Areas:** Epigenetics and Nuclear Signaling

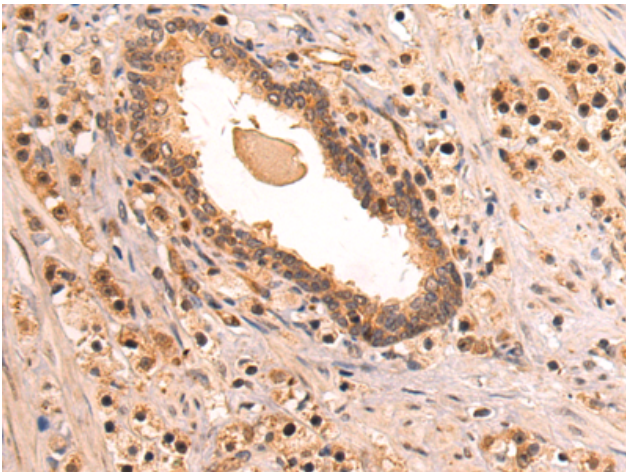
**Storage & Shipping:** Store at -20°C. Avoid repeated freezing and thawing



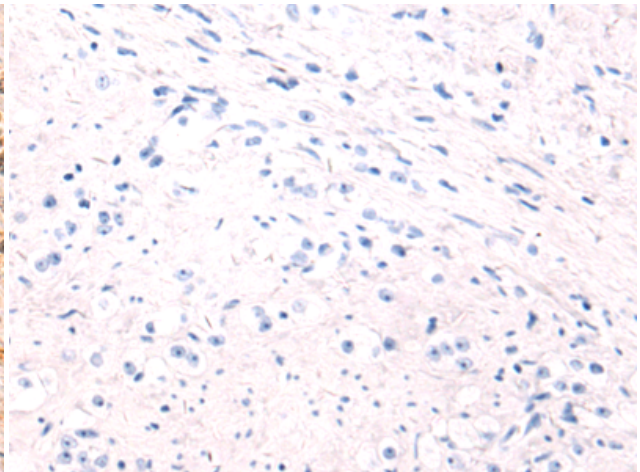
Immunohistochemistry analysis of paraffin-embedded Human thyroid cancer tissue using 211640(MED16 Antibody) at a dilution of 1/125(Cytoplasm or Nucleus).



In comparison with the IHC on the left, the same paraffin-embedded Human thyroid cancer tissue is first treated with the fusion protein and then with 211640(Anti-MED16 Antibody) at dilution 1/125.



The image on the left is immunohistochemistry of paraffin-embedded Human prostate cancer tissue using 211640(Anti-MED16 Antibody) at a dilution of 1/125.



In comparison with the IHC on the left, the same paraffin-embedded Human prostate cancer tissue is first treated with fusion protein and then with D123323(Anti-MED16 Antibody) at dilution 1/125.