

## MED28 RABBIT PAB

**Cat.#:** S218818

**Product Name:** Anti-MED28 Rabbit Polyclonal Antibody

**Synonyms:** EG1; magicin; 1500003D12Rik

**UNIPROT ID:** Q9H204 (Gene Accession - BC011936 )

**Background:** Component of the Mediator complex, a coactivator involved in the regulated transcription of nearly all RNA polymerase II-dependent genes. Mediator functions as a bridge to convey information from gene-specific regulatory proteins to the basal RNA polymerase II transcription machinery. Mediator is recruited to promoters by direct interactions with regulatory proteins and serves as a scaffold for the assembly of a functional preinitiation complex with RNA polymerase II and the general transcription factors. May be part of a complex containing NF2/merlin that participates in cellular signaling to the actin cytoskeleton downstream of tyrosine kinase signaling pathways.

**Immunogen:** Fusion protein of human MED28

**Applications:** ELISA, IHC

**Recommended Dilutions:** IHC: 200-400; ELISA: 5000-10000

**Host Species:** Rabbit

**Clonality:** Rabbit Polyclonal

**Isotype:** Immunogen-specific rabbit IgG

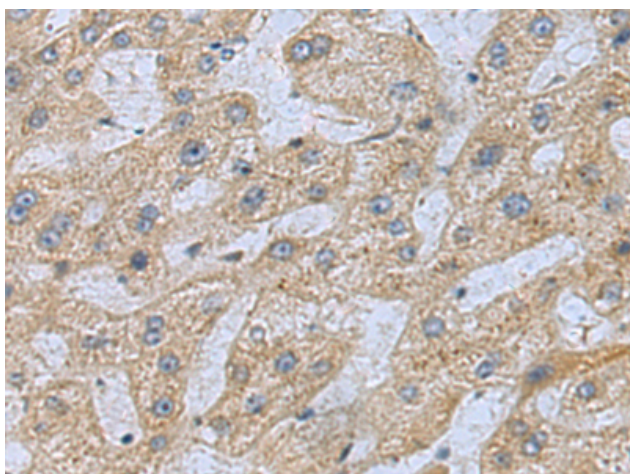
**Purification:** Antigen affinity purification

**Species Reactivity:** Human, Mouse, Rat

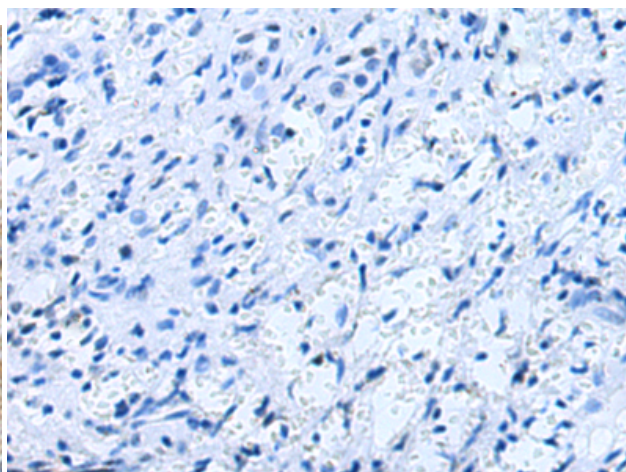
**Constituents:** PBS (without Mg<sup>2+</sup> and Ca<sup>2+</sup>), pH 7.4, 150 mM NaCl, 0.05% Sodium Azide and 40% glycerol

**Research Areas:** Epigenetics and Nuclear Signaling

**Storage & Shipping:** Store at -20°C. Avoid repeated freezing and thawing



Immunohistochemistry analysis of paraffin embedded Human liver cancer tissue using 218818 (MED28 Antibody) at a dilution of 1/200 (Cytoplasm).



In comparison with the IHC on the left, the same paraffin-embedded Human liver cancer tissue is first treated with the fusion protein and then with 218818 (Anti-MED28 Antibody) at dilution 1/200.



# Product Description

Pioneering GTPase and Oncogene Product Development since 2010

---