

MEDAG RABBIT PAB

Cat.#: S221637

Product Name: Anti-MEDAG Rabbit Polyclonal Antibody

Synonyms: AWMS3; MEDA4; MEDA-4; hAWMS3; C13orf33

UNIPROT ID: Q5VYS4 (Gene Accession - NP_116238)

Background: Involved in processes that promote adipocyte differentiation, lipid accumulation, and glucose uptake in mature adipocytes.

Immunogen: Synthetic peptide of human MEDAG

Applications: ELISA, WB, IHC

Recommended Dilutions: IHC: 50-300;WB: 500-2000;ELISA: 5000-10000

Host Species: Rabbit

Clonality: Rabbit Polyclonal

Isotype: Immunogen-specific rabbit IgG

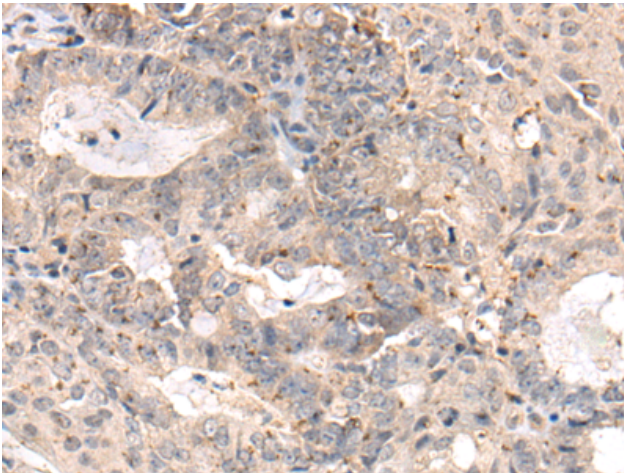
Purification: Antigen affinity purification

Species Reactivity: Human, Mouse

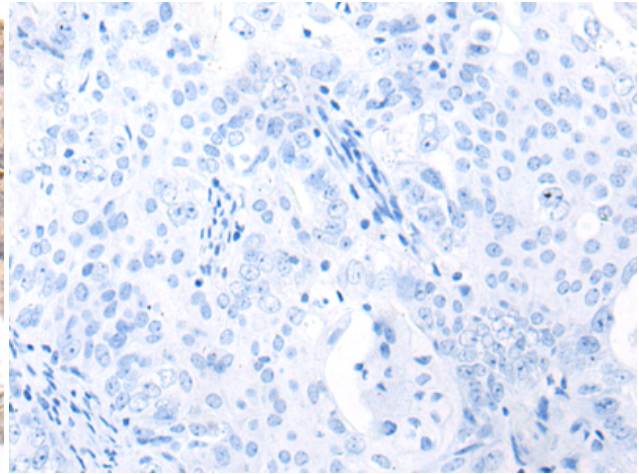
Constituents: PBS (without Mg²⁺ and Ca²⁺), pH 7.4, 150 mM NaCl, 0.05% Sodium Azide and 40% glycerol

Research Areas: Metabolism

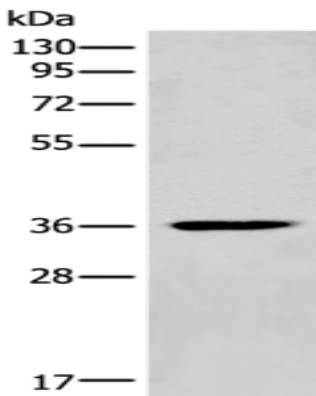
Storage & Shipping: Store at -20°C. Avoid repeated freezing and thawing



Immunohistochemistry analysis of paraffin embedded Human ovarian cancer tissue using 221637 (MEDAG Antibody) at a dilution of 1/75 (Cytoplasm).



In comparison with the IHC on the left, the same paraffin-embedded Human ovarian cancer tissue is first treated with the synthetic peptide and then with 221637 (Anti-MEDAG Antibody) at dilution 1/75.



Gel: 8% SDS-PAGE, Lysate: 40 μ g;
Lane: Mouse heart tissue lysate;
Primary antibody: 221637 (MEDAG Antibody) at dilution 1/700;
Secondary antibody: Goat anti rabbit IgG at 1/8000 dilution;
Exposure time: 30 seconds